

Lassen County Community Wildfire Protection Plan 2019 Work Plan

Lassen County



December 2019



Representatives of resource, fire planning and prevention interests met on April 2, 2019 to develop the Lassen County Community Wildfire Protection Plan, 2019 Work Plan. The process began in March of 2019, through online collaboration and reporting, and it was completed in December of 2019.

Attendees: Don Hansen, Consulting RPF, Lassen County Fire Safe Council, Inc. (LCFSC); Gordon Bauer, RPF, HL Power; Pat Holley, Lassen Municipal Utility District; Karl Todd, BLM Eagle Lake Field Office; Chuck Lewis, Lassen National Forest (LNF), Eagle Lake Ranger District; Wes Palmer, RPF, Sierra Pacific Industries (SPI); Tom Esgate, Managing Director LCFSC; Nicki Moroney, Secretary Treasurer, LCFSC; Andrew Mueller, BLM; Mark Shaffer, Consulting RPF, LCFSC; Mark Pustejovski, RPF, SPI; Lloyd Keefer, RPF, LCFSC Chair; LCFSC; Erin Brogan, BLM; Joe Hoffman, LNF, Hat Creek Ranger District; Ivan Houser, RPF, CAL FIRE, Lassen Modoc Unit (LMU); Carol Keefer, LCFSC; Chris Voelker, Plumas National Forest; Scott Packwood, Unit Chief, LMU; Don Schroeder, RPF, CAL FIRE; CAL FIRE, LMU; Anne Stephens, NRCS; Ryan Hilburn, RPF, WM Beaty & Associates; Dean Lofthus, RPF, Fruit Growers Supply; William Johnson, Honey Lake Valley Resource Conservation District.

Table of Contents

Priority Private Land Projects Ranking List	v
2018 Wildland Urban Interface Map (Note for best viewing of this map go to lassenfiresafecouncil.org and select CWPP >WUI Map)	1
2015 CWPP Base Map (Note for best viewing of this map go to lassenfiresafecouncil.org and select CWPP >Base Map)	2
Private Land Projects	
Lassen County Fire Safe Council, Inc. Narrative	3
Big Valley Mountain	4
Clear Creek	5
Diamond Mountain	6
Doyle	7
Janesville	8
Letter Box	9
Little Valley	10
Madeline	11
Milford	12
South Eagle Lake	13
Spalding	14
Private & Public Land Projects	
Cooperative Sagebrush Steppe Restoration Initiative Narrative	15
Ash	16
Ash Valley IV	17
McBride Springs	18
McClelland	19
Public Agency Projects	
Bureau of Land Management, Eagle Lake Field Office Narrative	20
Black Mountain	22
Fredonyer	23
Little Cleghorn	24
Middle Creek Stepper Restoration Project	25
Shinn Ranch Juniper Reduction	26
Spanish & Madeline Units	27
Bureau of Land Management, Applegate Field Office	
80 Day and 40 Night Forest Health Project	28
Ash Creek	29
Cassel	30
Day Fuels Reduction	31
Dry Cow Hand Only	32

Dry Cow Mechanical	33
Long Hill	34
Ryegrass Swale	35
South Graves	36
Stony Breaker Road	37
Thomas Creek	38
Upper Tuledad	39
XL	40
Honey Lake Valley RCD	
Lassen Creek	41
Lassen National Forest, Eagle Lake Ranger District	
Acer Project	42
Harvey	43
Moonlight-Fredonyer	44
Moonlight-Roxie	45
Spalding	46
Whaleback	47
Modoc National Forest	
Ash Timber Sale	48
Ditch Project	49
Natural Resources Conservation Service	
Roberts Ranch	50
Plumas National Forest Narrative	
Eastside Under Cradle Valley	51
Eastside Under Burn Last Chance	52
Eastside Under Burn Crystal Adams	53
Sierra Pacific Industries	
Mountain Meadows 2	54
Office View 2	55
V Line Dyer	56

CalFire Lassen Modoc Unit Fire Plan

Incorporated into the Lassen County CWPP 2019 Work Plan by Reference:

<https://www.arcgis.com/home/item.html?id=80803c5535ef4a45827cff0f3387b3b9>

2019 CWPP Work Plan Private Land Priority Projects Ranking

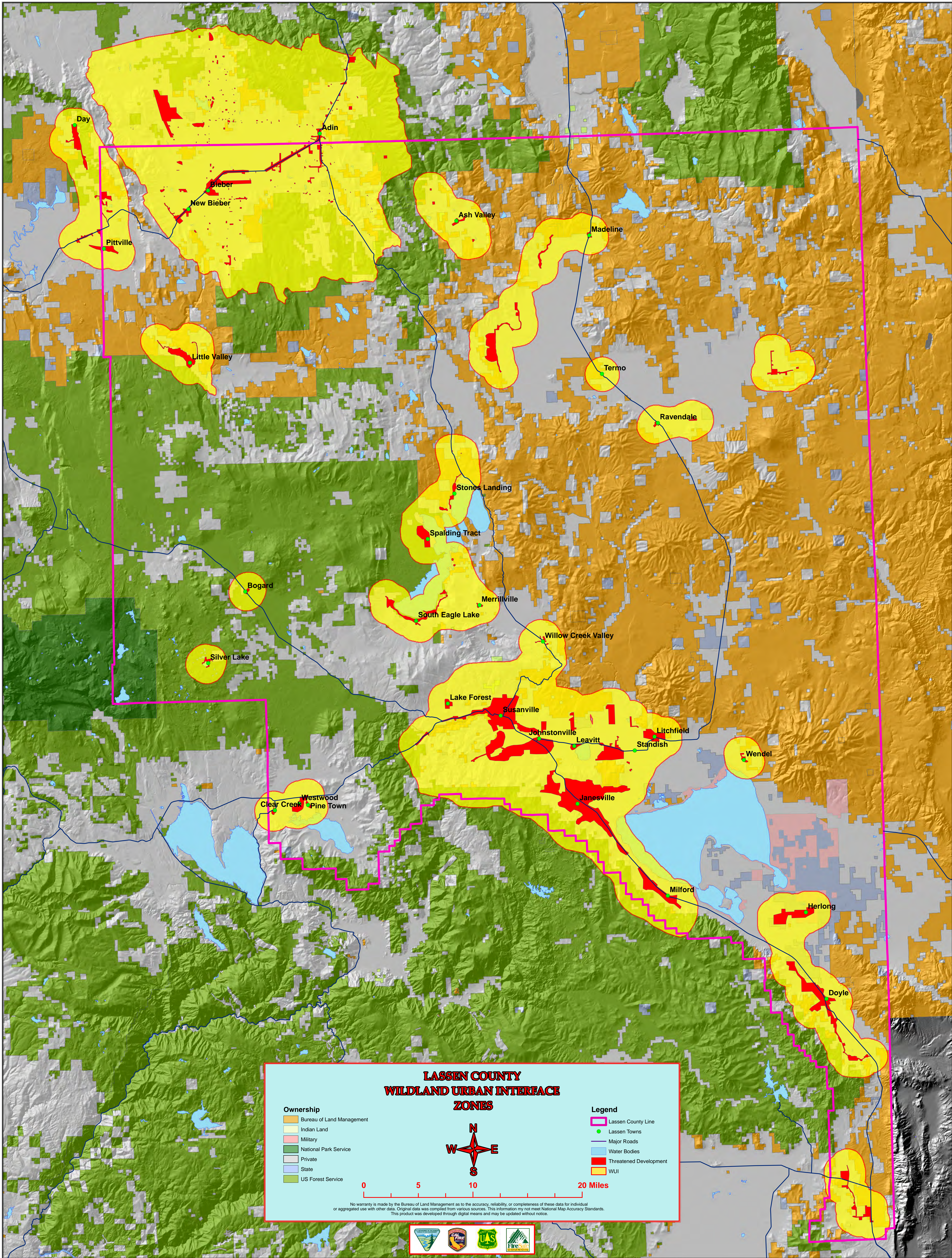
The Lassen County CWPP Work Plan ranks private land projects in a collaborative process that considers:

1. Guidelines recommended by the National Association of State Foresters, which state *“Projects are prioritized based on the probability of success, community involvement and collaboration, and sustainability”*¹, and;
2. Calfire, Lassen Modoc Unit ranking criteria, and;
3. Input from all Annual CWPP Work Plan participants

Annual ranking is adopted by consensus.

2019 Lassen County CWPP Ranking Worksheet														
CWPP Ranking	Project	Community Involvement	Probability of Success	Collaboration	Sustainability	Match	% of Match Available	Total CWPP Criteria Points	CAL FIRE History	CAL FIRE Threat	CAL FIRE Response	CAL FIRE Proximity	CAL FIRE Scores	Combined Scores
1	Diamond Mountain	5	5	5	5	5	100	25	6	6	2	1	15	40
1	Big Valley Mountain	5	5	5	5	5	100	25	6	6	2	1	15	40
1	Little Valley	5	5	5	5	5	100	25	6	6	2	1	15	40
1	South Eagle Lake	5	5	5	5	5	100	25	6	6	2	1	15	40
2	Janesville	5	3	5	4	5	100	22	6	6	1	1	14	36
3	Milford	3	3	5	3	5	60	19	2	6	3	1	12	31
4	Doyle	3	4	4	4	2	40	17	2	6	3	1	12	29
5	Clear Creek	5	3	3	3	5	100	19	1	6	0	1	8	27
5	Spaulding	5	3	3	5	2	40	18	3	4	1	1	9	27
6	Madeline	2	3	3	3	5	100	16	2	4	2	1	9	25
7	McBride Springs	1	3	1	5	5	100	15	0	4	3	0	7	22
7	Ash Valley III	1	2	2	5	5	100	15	1	4	2	0	7	22
8	Letter Box	1	4	3	5			13	1	4	1	0	6	19
9	McClelland	1	5	2	5			13	0	4	0	0	4	17

¹ Dan Smith, Fire Director, National Association of State Foresters, Presentation at the 2012 Wildland Urban Interface Conference, Reno Nevada.



Lassen County Fire Safe Council

County Fire Plan Base Map

29 April 2011

Fuel Reduction Projects

USFS Projects
 Awarded/Completed
 Planning/In-Progress

BLM Projects
 Awarded/Completed
 Planning/In-Progress

Lassen County Fire Safe Council Projects
 Awarded/Completed
 Planning/In-Progress

Timber Harvest Plans (THPs)

Industrial Timberlands

Awarded/Completed
 Planning/In-Progress

Other Private Timberlands

Awarded/Completed
 Planning/In-Progress

WUI
 Wildland Urban Interface (WUI)
 Communities

Ownership
 National Forest
 BLM
 NPS and Other Federal
 State and Local
 Other Ownership

Background Layers

Major Roads
 Secondary Roads
 County Boundary
 Wilderness



Disclaimer Statement
 The USDA Forest Service uses the most current and complete data available. GIS data and product accuracy may vary. They may be developed from sources of differing accuracy, accurate only at certain scales, based on modeling or interpretation, incomplete while being created or revised, etc. Using GIS products for purposes other than those for which they were intended may yield inaccurate or misleading results. The USDA Forest Service reserves the right to correct, update, modify, or replace GIS products without notification.

Lassen Fire Safe Council Base Map.pdf
 Modified April 28, 2011
 by Patricia Peterson, GIS, Lassen National Forest

0 6 12 Miles



Lassen County Fire Safe Council

Lloyd Keefer, Chair
Bob Andrews, Vice Chair
Nicki Moroney, Secretary/Treasurer

P.O. Box 816 • Susanville, CA 96130 • (530) 251-5560 • www.lassenfiresafecouncil.org

April, 2019

This year marked the 14th year that the Lassen County Community Wildfire Protection Plan (CWPP) Working Group has gathered, reviewed and ranked projects and reviewed the Wildland Urban Interface boundaries throughout the county. Under the MOU with the participants, Lassen County Fire Safe Council, Inc. continues in its leadership role in CWPP planning and coordination. Our monthly general meeting also continue to be forums for CWPP participants and the community as a whole. In August of 2018 the Lassen County Board of Supervisors allocated funds to support our CWPP and *Firewise Communities USA* efforts, which continue to allow us to dedicate more time and energy to these critical programs, including the popular community Green Waste Days.

The CWPP Working Group continues to place its highest priority on moving forward with planning for Diamond Mountain fuel treatments. All participating CWPP partners believe that a combined public/private partnership is best path forward to preserve and restore the greater Susanville watershed and protect communities in the shadow of Diamond Mountain. LCFSC continues to take the lead role in coordinating the effort.

Lassen County Fire Safe Council, Inc. continues to build on our strong partnerships. We have an aggressive program of active and planned fuel treatments and we are also ramping up the pace of getting Lassen County communities organized and recognized by the *Firewise Communities USA* program. We have 10 recognized communities to date.

Part and parcel of this *Firewise* effort is our one-on-one contact with residents through our Risk Assessment in the Home Ignition Zone consultations. Here residents learn what they can do to reduce structural ignitability in the advent of a nearby wildfire. One important point to remember: **Many of the homes that are lost in wildfires are ignited by embers from a fire a substantial distance away, and then the home ignites the adjacent vegetation, not vice versa!** As we say in our homeowner consultations: "This new information is standing things on their head in California where there is a huge and important emphasis on defensible space." Just having defensible space will not protect the home from an ember shower, one must also address structural ignitability. We continue to receive rave reviews from residents during our visits and we often hear "I had no idea..." at the close of our consultations.

Last year we continued to work on the current phases of our Day Lassen Bench, Little Valley and private lands within the Diamond Mountain watershed. We also acquired over \$17,000,000 of funds to implement our Diamond Mountain, Clear Creek, South Eagle Lake and Big Valley Mountain projects.

A big thank you to all our partners in the Lassen County CWPP Working Group,

Lloyd Keefer,

Chair



We are active participants in FIREWISE Communities USA programs.

2019 Lassen County CWPP Work Plan

WUI Area: Day/Lookout/Big Valley

Funding: Partially Funded

2019 Implementation

Number of Acres: 13,400

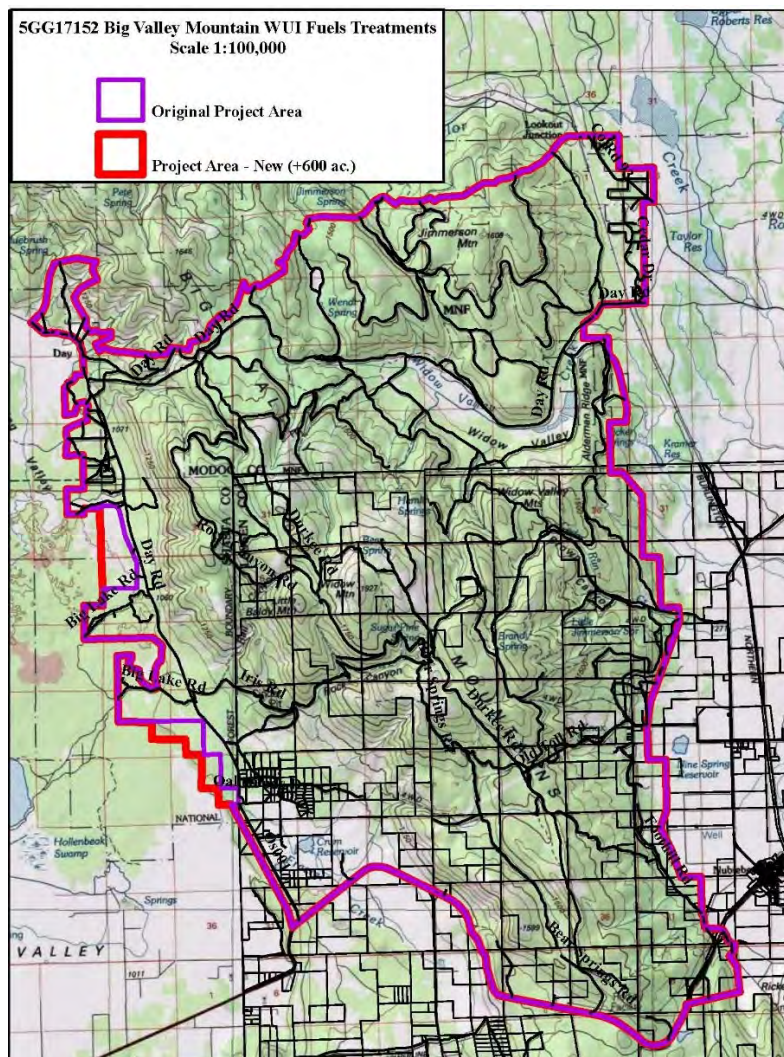
Agency or Agencies: LCFSC, SPI, WM Beaty, CAL FIRE

Project Name: Big Valley Mountain WUI Fuel Treatments

Project Coordinates: -121.232 41.067

Summary of Project: Project continues Lassen County Fire Safe Council's landscape scale WUI hazardous fuel reduction and removal fuel treatments, including dead and dying trees, within the Big Valley Mountain range. With this project we will be implementing 13,400 acres of hazardous fuel reduction and removal fuel treatments, including dead and dying trees, on private land within the SRA, primarily within the Very High and High Hazard Fire Severity Zones. The project will reduce wildland fire risk for 491 habitable structures within the 51,826-acre Project Area/Area of Influence. The vast majority of the project area lies within a Wildland Urban Interface Zone (WUI). The project merges and implements 3 previous CWPP projects: Day Lassen Bench, Lookout and Big Valley Mountain Fuelbreak.

Project Map:



2019 Lassen County CWPP Work Plan

WUI Area: Westwood-Clear Creek

Funding: Partially Funded

2019 Implementation

Number of Acres: 1850

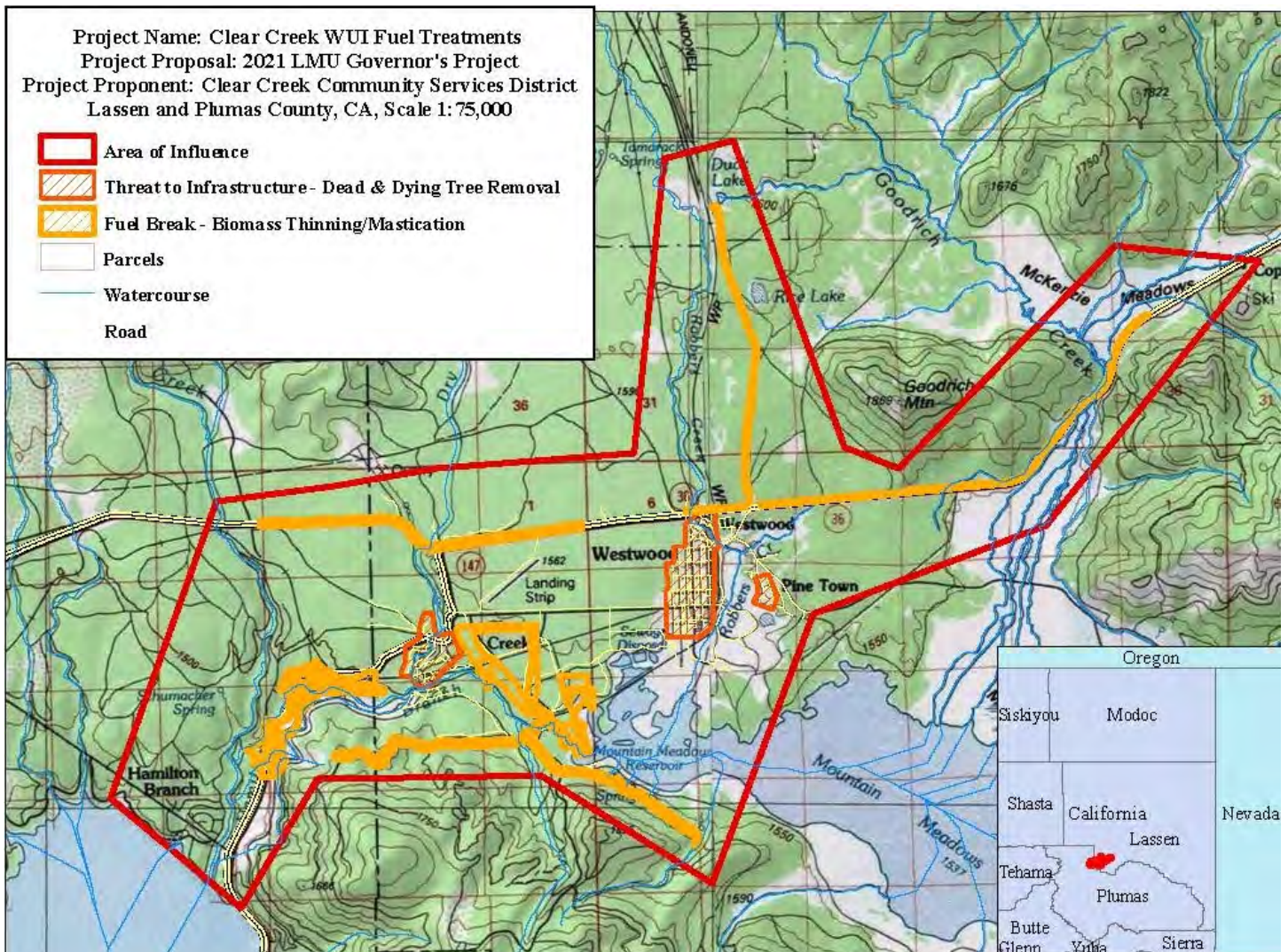
Agency or Agencies: LCFSC, SPI, W.M. Beaty, CAL FIRE, PG&E, Clear Creek CSD

Project Name: Clear Creek Forest & Meadow Restoration Project

Project Coordinates: N40.29628 W121.05017

Summary of Project: LCFSC has completed over 900 acres of the project to date. Partners include: CCCSD, CAL FIRE, SPI, W.M. Beaty & Associates and PG&E. Brush fuels will be masticated where they pose a threat to homes and/or are within potential evacuation corridors. We will also perform additional Risk in the Home Ignition Zone/structure ignitability assessments with community residents, provide additional treatments around homes and construct additional fuel breaks. Additional treatment funds are being requested from CAL FIRE to perform more mastication, thinning and community treatments that will restore the watershed and reduce hazardous fuel loads within and around the Clear Creek community..

Project Map:



2019 Lassen County CWPP Work Plan

WUI Area: Susanville

Funding: Partially Funded

2019 Implementation

Number of Acres: 7000

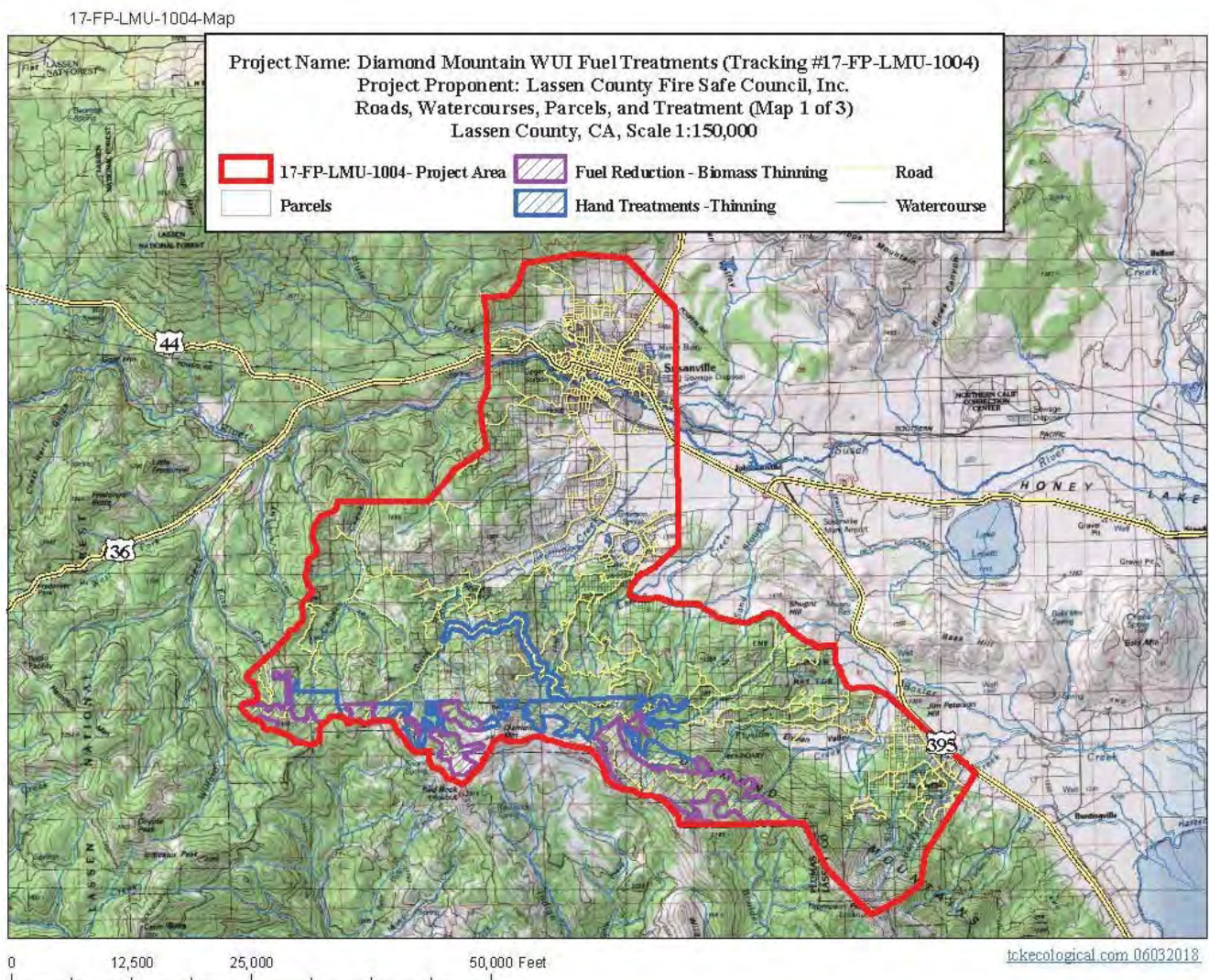
Agency or Agencies: LCFSC, CAL FIRE, SNC, HLVRCD, USFS, WM Beaty, BLM

Project Name: Diamond Mountain

Project Coordinates: N40.3214 W120.6690

Summary of Project: LCFSC will continue planning for a collaborative fuels treatment project along and below Diamond Mountain south of Susanville. Work will tie in to work previously completed by LCFSC, BLM and HLVRCD. LNF will be the lead for USFS land and LCFSC will be the lead for private land within the project area. It is anticipated the LCFSC will be asking for assistance from CFSC, SNC, CalFire and USFS with funding.

Project Map:



2019 Lassen County CWPP Work Plan

WUI Area: Doyle

Funding: Planning/Not Funded

2019 Planning

Number of Acres:

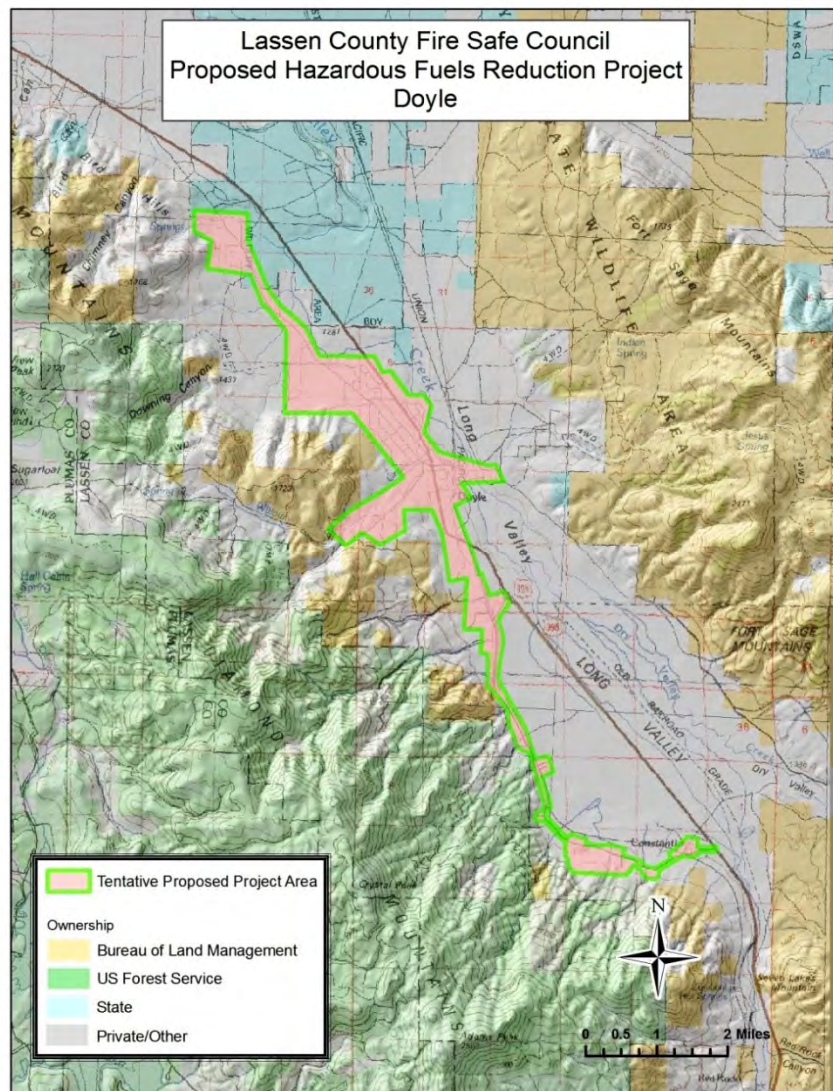
Agency or Agencies: LCFSC, PNF, BLM

Project Name: Doyle Fuel Treatments and Risk Assessments

Project Coordinates: N40.0273 W120.1030

Summary of Project: LCFSC, in conjunction with PNF and BLM, is in the initial planning stage of assisting the community of Doyle in gaining Firewise Communities USA status/certification and with a possible fuels treatment project that could include fuel breaks in sagebrush areas surrounding the community. Also under consideration could be private land forest thinning with cooperating landowners that are adjacent to PNF. Risk Assessments in the Home Ignition Zone/structural ignitability assessments would also be conducted with community residents. LCFSC has been making its initial contacts with community members.

Project Map:



2019 Lassen County CWPP Work Plan

WUI Area: Janesville

Funding: Planning/Not Funded

2019 Planning

Number of Acres: 6000

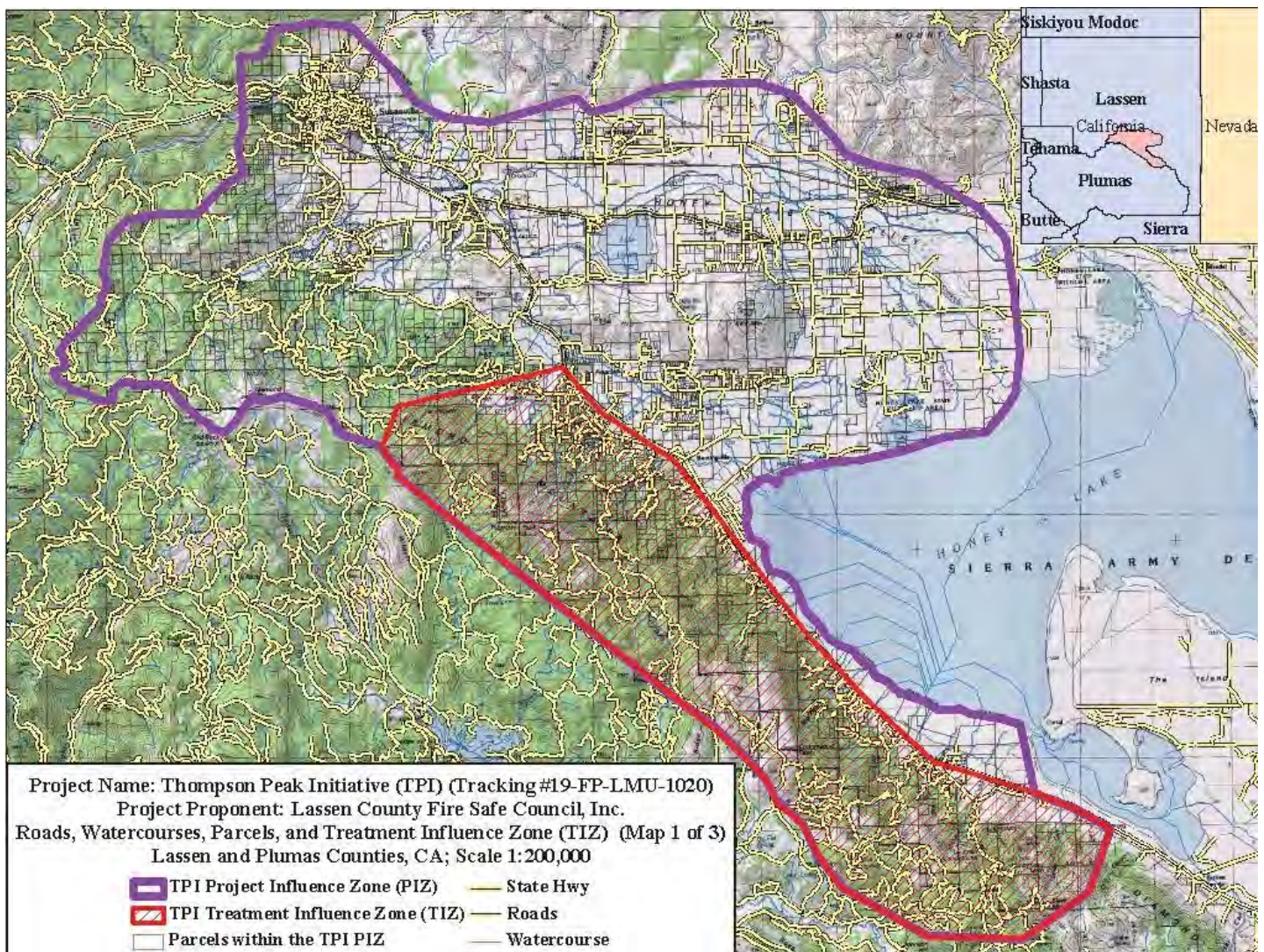
Agency or Agencies: LCFSC, Janesville Town Council, PNF,

Project Name: Thompson Peak Initiative, Janesville

Project Coordinates: N40.26777 W120.49461

Summary of Project: Project would continuation of the 2014 fuel treatments and Risk Assessments in the Home Ignition Zone/structural ignitability assessments. The planned treatments would include developing defensible space around homes and implementing landscape scale fuel treatments. Forest stands will be thinned and brush fuels will be masticated where they pose a threat to homes and/or are within potential evacuation corridors. Biomass utilization of material would be used to reduce costs. Project merges Janesville & Milford Projects.

Project Map:



2019 Lassen County CWPP Work Plan

WUI Area: Adin

Funding: Planning/Not Funded

2019 Implementation

Number of Acres: 400

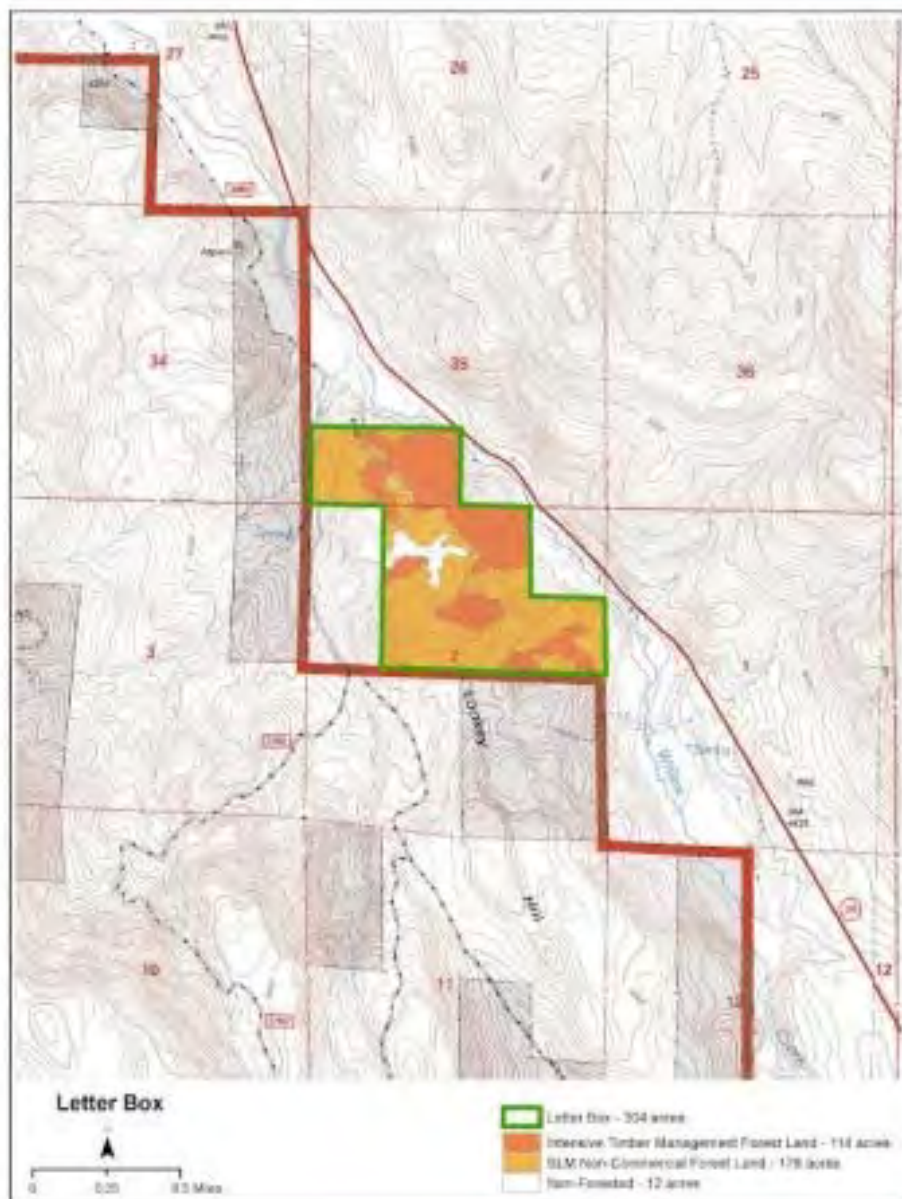
Agency or Agencies: LCFSC, BLM-AFO

Project Name: Letter Box

Project Coordinates: 0676147 4549573

Summary of Project: Commercial thinning of overstocked stands to achieve the desired stocking level (approximate BA of 80sq. ft.) to increase health and vigor. Commercial and non-commercial sanitation harvest of trees to control insects and disease.

Project Map:



2019 Lassen County CWPP Work Plan

WUI Area: Little Valley

Funding: Partially Funded

2019 Implementation

Number of Acres: 100

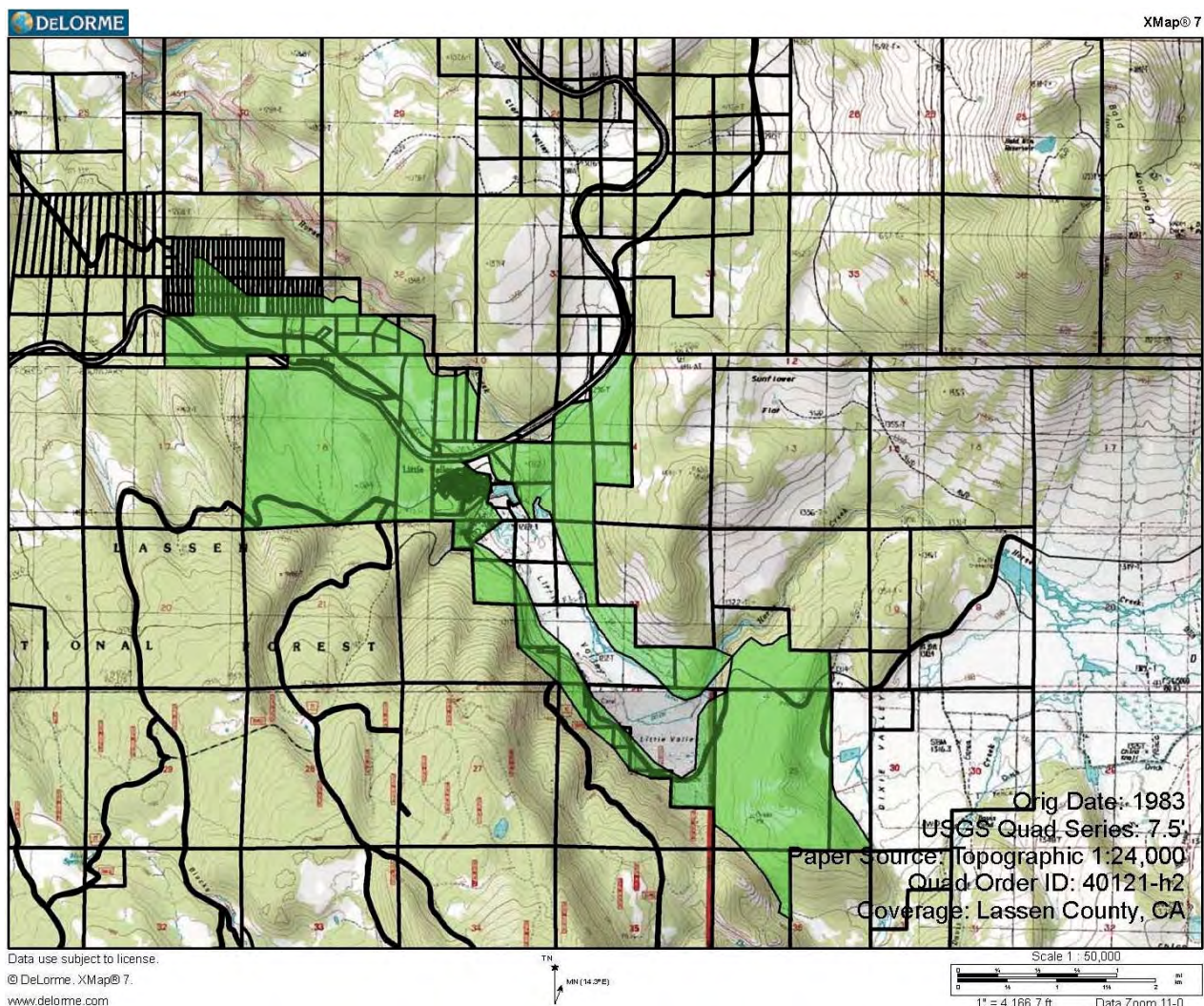
Agency or Agencies: LCFSC, Calfire, PG&E, USFWS, Little Valley CSD

Project Name: Little Valley Forest & Meadow Restoration Project

Project Coordinates: N40.8938 W121.1815

Summary of Project: LCFSC has received partial funding for this project. We are seeking funds to complete the project. Primary work will be the removal of invasive western juniper and forest thinning in overstocked pine stands. The project will also assist community homeowners with treatments within the Little Valley residential neighborhood and protect community infrastructure (PG&E electric lines). Risk in the Home Ignition Zone/structure ignitability assessments within and around the community will also be part of the project. Project may also include prescribed fire follow-up/maintenance of previously completed treatments.

Project Map:



2019 Lassen County CWPP Work Plan

WUI Area: Madeline

Funding: Planning/Not Funded

2019 Planning

Number of Acres: 8,718

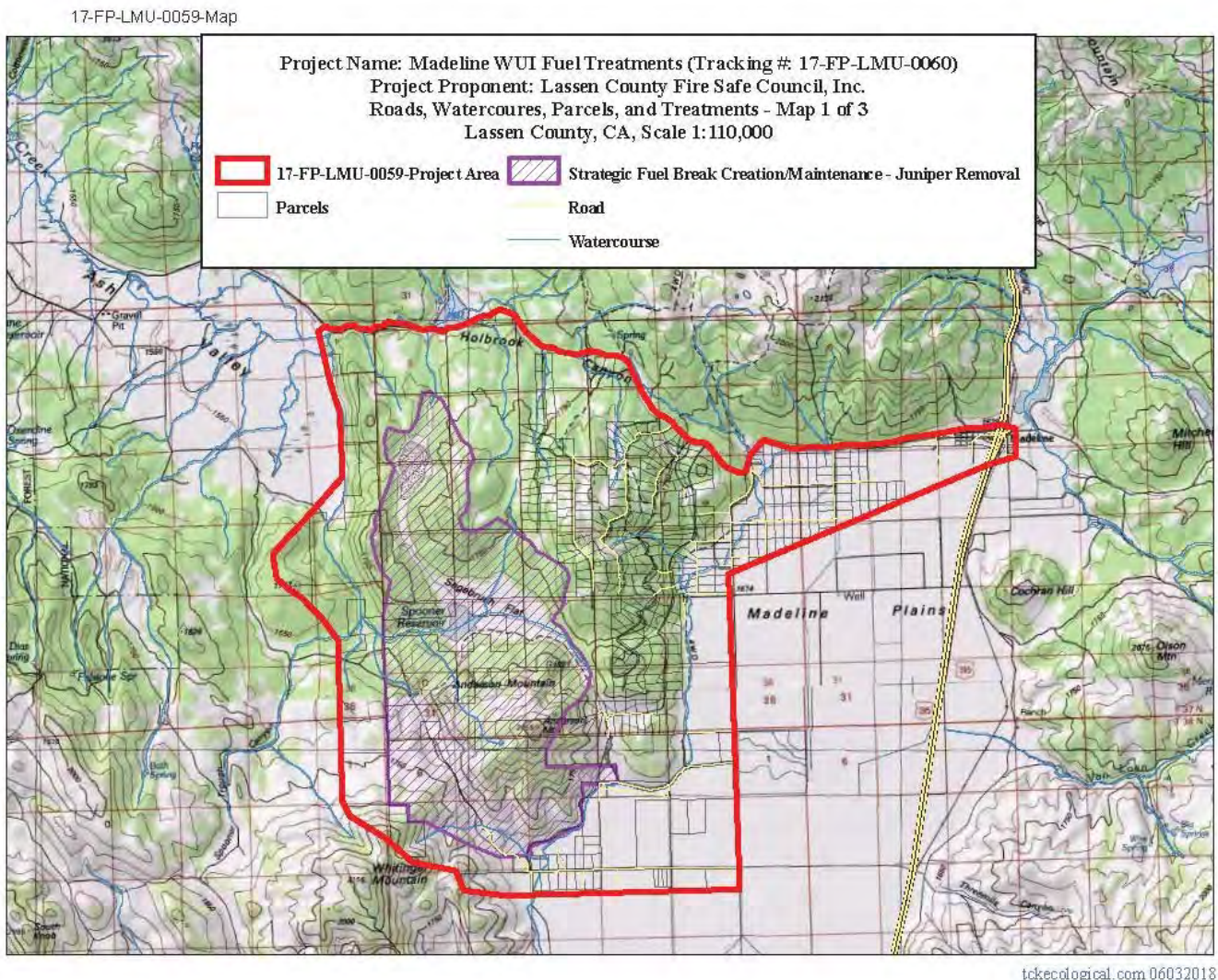
Agency or Agencies: LCFSC, PRCD, CAL FIRE, BLM-AFO

Project Name: Madeline

Project Coordinates: N41.0514 W120.4567

Summary of Project: Project to include a Community Assessment, Firewise Community recognition, Risk Assessments in the Home Ignition Zone/Structural Ignitability Assessments, Fuel Treatments Around Structures and Landscape Scale Fuel Treatments. Project merges our previous Ash Valley IV and Spooner Reservoir projects.

Project Map:



2019 Lassen County CWPP Work Plan

WUI Area: Milford

Funding: Partially Funded

2019 Planning

Number of Acres: 6000

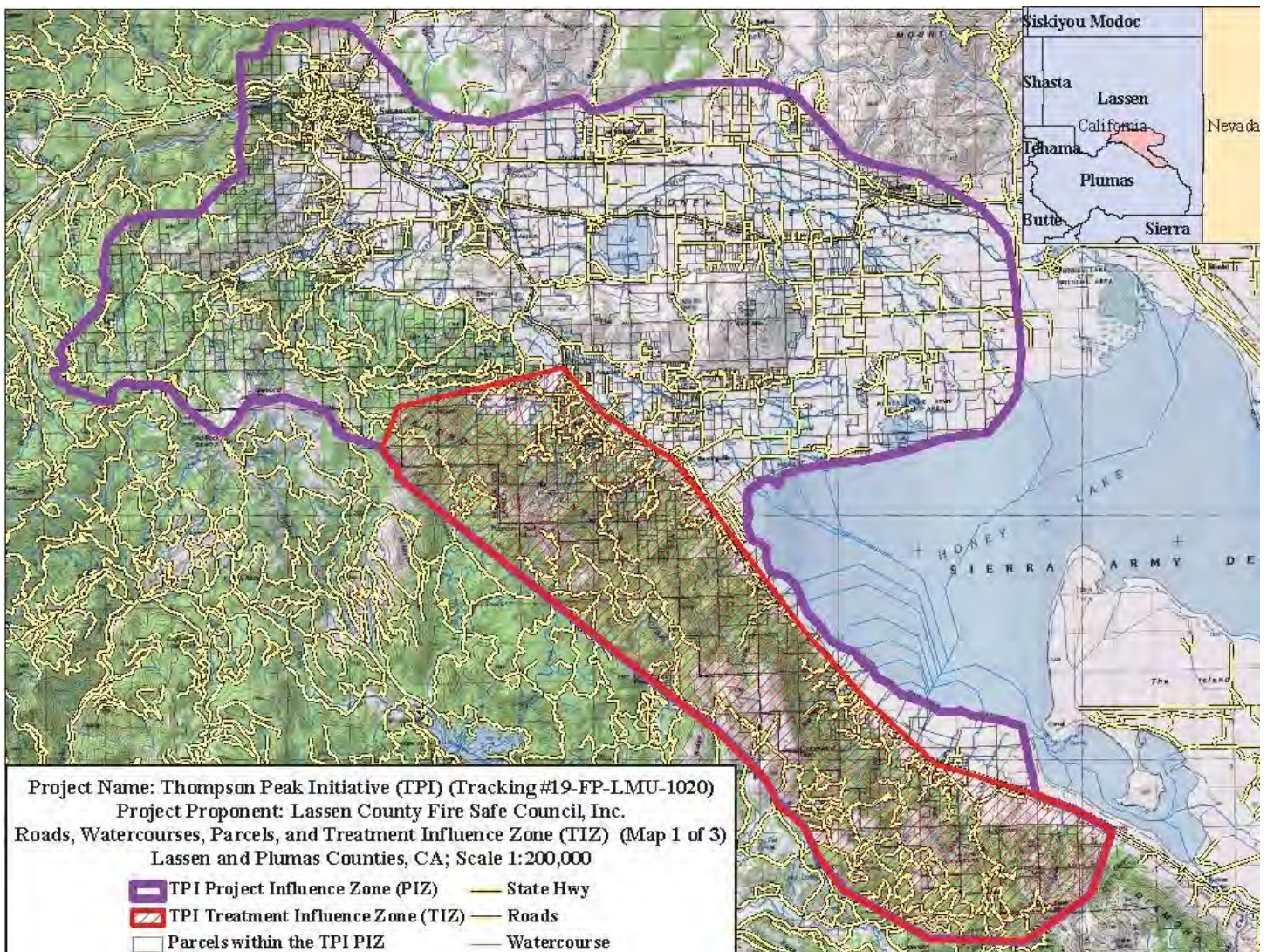
Agency or Agencies: LCFSC, Milford Fire District, PNF

Project Name: Milford Firewise & Thompson Peak Initiative

Project Coordinates: N40.1768 W120.3885

Summary of Project: LCFSC completed the first phase of fuel treatments in 2015. 600 acres of fuel treatments were accomplished along with residential Risk Assessments in the Home Ignition Zone/structural ignitability assessments. Firewise Community re-certification activities are planned and another phase of fuel treatments will be planned as a significant number of property owners have expressed interest. Merges with Janesville Project.

Project Map:



2019 Lassen County CWPP Work Plan

WUI Area: South Eagle Lake/Susanville

Funding: Partially Funded

2019 Implementation

Number of Acres: 5737

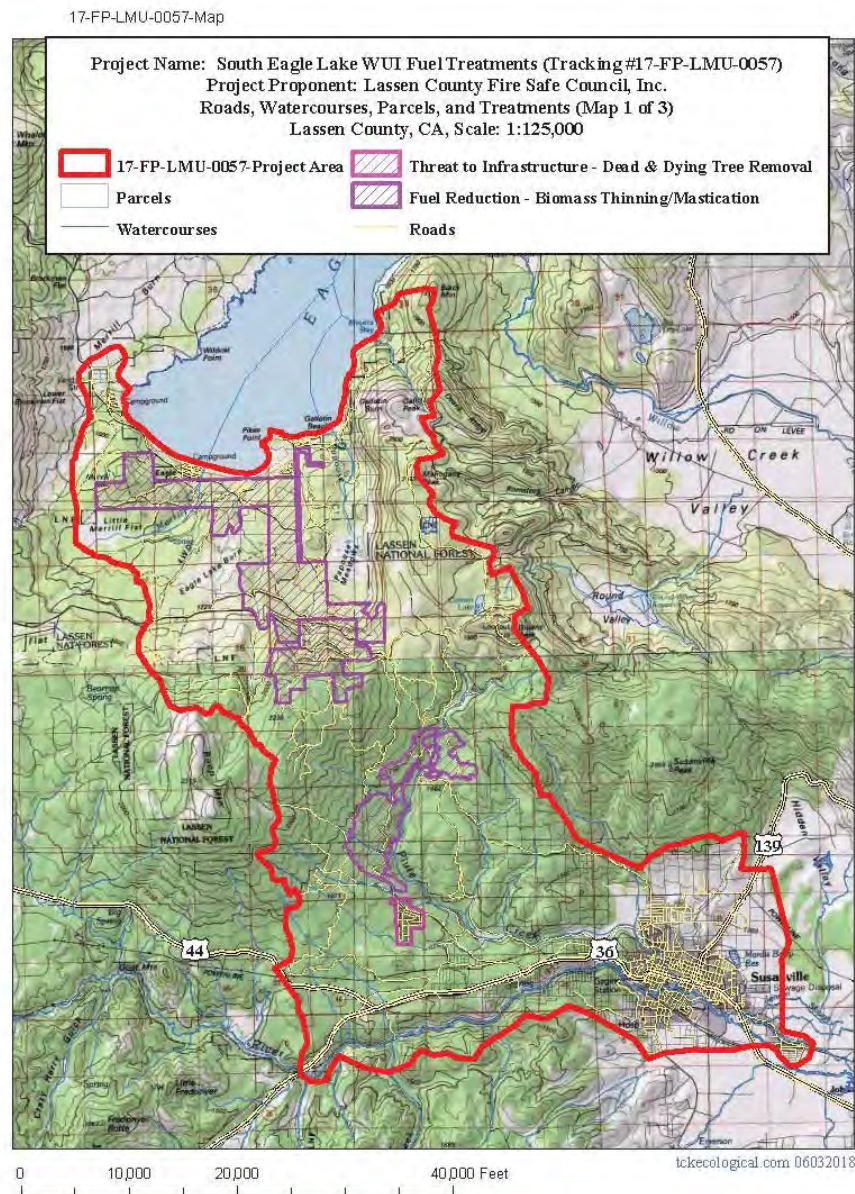
Agency or Agencies: LCFSC, WMB, FGS, CAL FIRE

Project Name: South Eagle Lake/Lake Forest, Forest & Watershed Restoration

Project Coordinates: 40 32 22 120 47 1

Summary of Project: Biomass thinning of plantation and native forests, mastication and emergent brush treatments to restore forest and watershed as well as removal of trees around structures in the Lake Forest community. Project merges our previous Eagles Nest and North Susanville projects.

Project Map:



2019 Lassen County CWPP Work Plan

WUI Area: Spaulding

Funding: Planning/Not Funded

2019 Planning

Number of Acres: 40

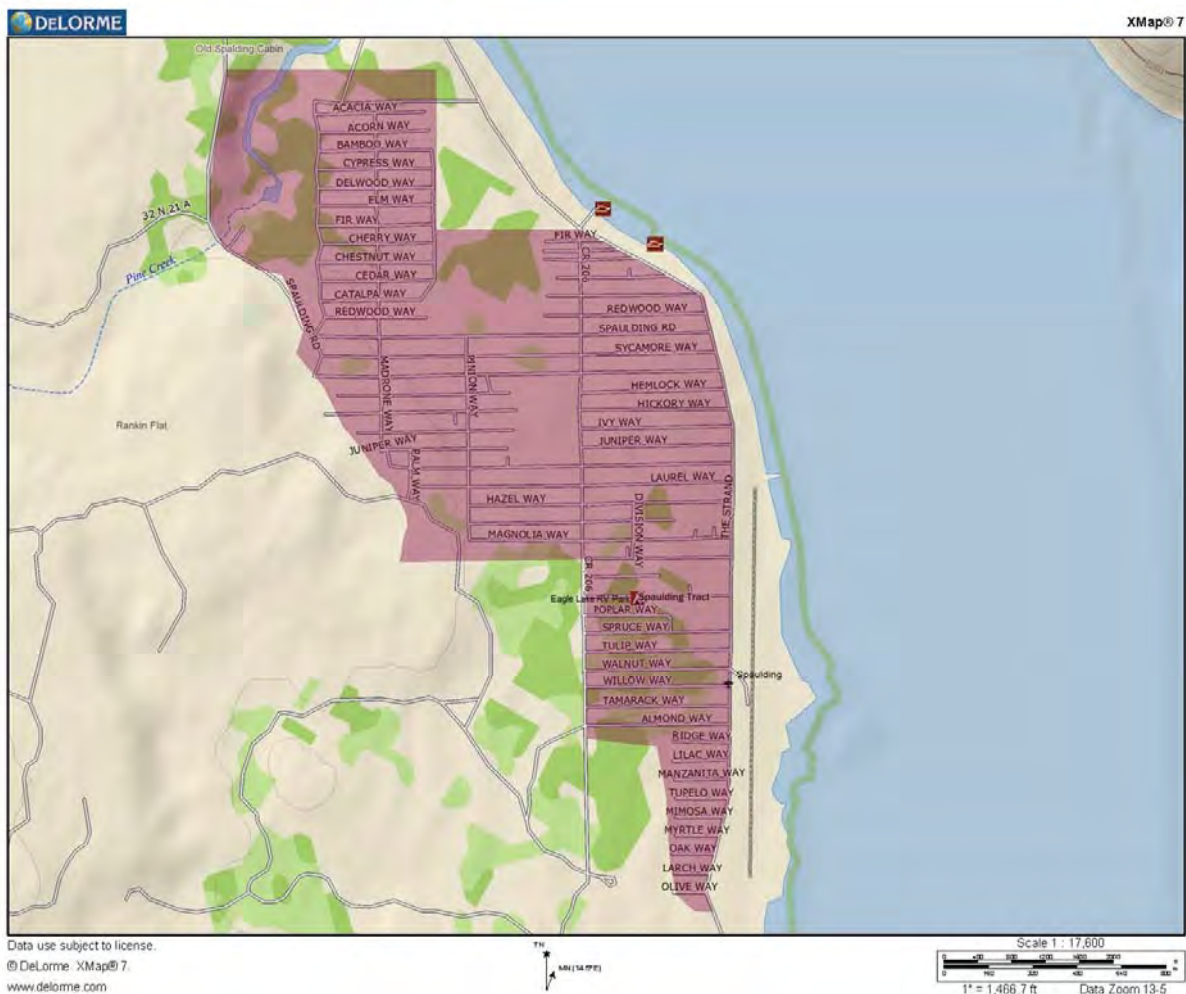
Agency or Agencies: LCFSC

Project Name: Spaulding Fuel Reduction Planning and Risk Assessments

Project Coordinates: N40.6573 W120.7759

Summary of Project: LCFSC will be seeking funds to perform risk assessments in the home ignition zone and fuel reduction treatments within and around the Spaulding community in Lassen County. Green waste days will be planned for the Summer of 2019. Work will complement previously completed work by LNF. We may be asking for funding and/or assistance from Lassen County/Title III, CFSC, CalFire, Lassen County RAC or USFS

Project Map:





Cooperative Sagebrush Steppe Restoration Initiative

Thomas W. Esgate, Project Director
PO Box 816
Susanville, California 96130
530-310-0146
tom.esgate@gmail.com

The *Cooperative Sagebrush Steppe Restoration Initiative* is an informal partnership that began in 2004, with the principle partners being the Pit Resource Conservation District, Lassen County Fire Safe Council, Susanville Indian Rancheria and University of California Cooperative Extension, Lassen County. We entered into a formal Memo of Understanding in 2007 with Lassen and Modoc Counties; CalFire; North Cal-Neva Resource Conservation and Development Council; United States Department of Interior, Bureau of Land Management; United States Department of Agriculture, US Forest Service. We partner with almost every conceivable agency to plan and implement sagebrush steppe and eastside pine restoration projects that are mitigating the impacts of invasive western juniper (*Juniperus occidentalis*).

Our projects to date have restored over 19,000 acres of critical wildlife habitat and watershed. The Lassen County Resource Advisory Committee has been a solid partner that funded our administrative needs from 2009-12.

2019 Lassen County CWPP Work Plan

WUI Area: Ash Valley

Funding: Planning/Not Funded

2019 Planning

Number of Acres: 1900

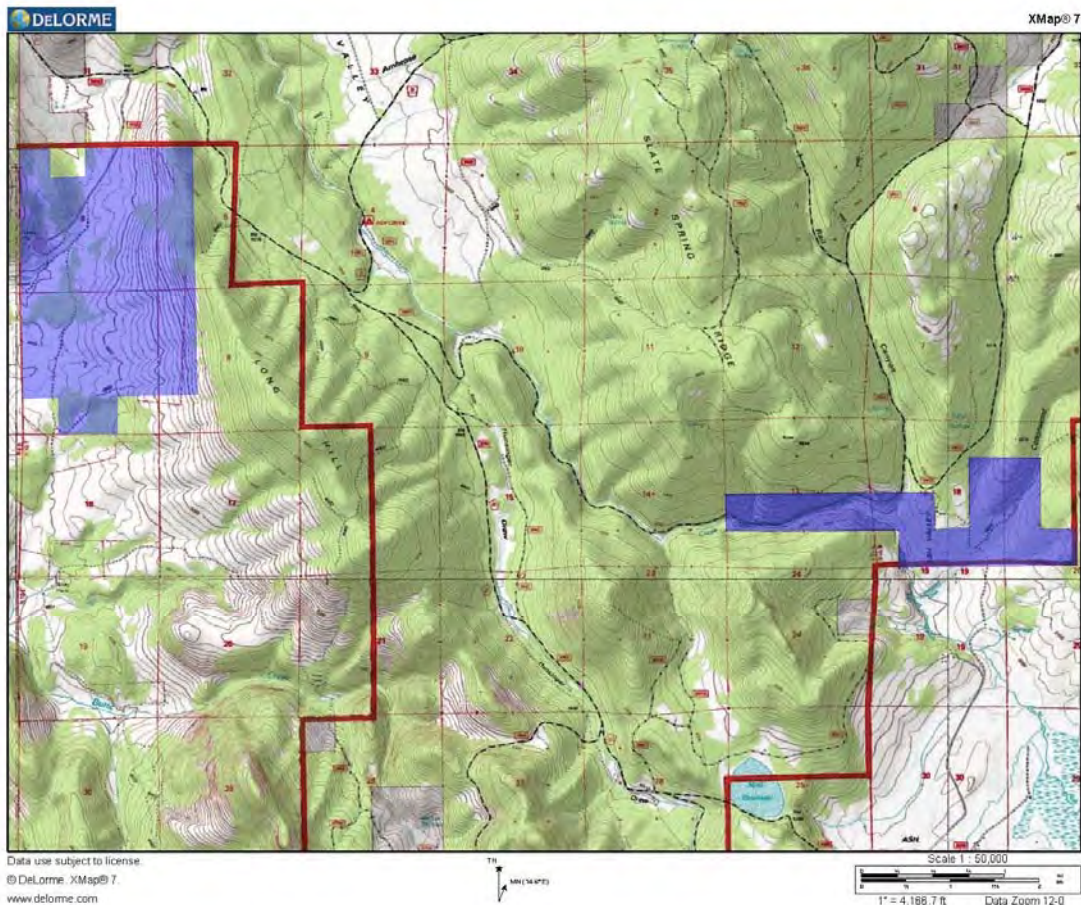
Agency or Agencies: CSSRI

Project Name: Ash Watershed Restoration Project

Project Coordinates: N41.1435 W120.8013

Summary of Project: CSSRI will continue planning with the Modoc National Forest (MDF) on a collaborative fuels treatment project west and north of the Ash Valley Community. MDF will be the lead for USFS land and LCFSC will be the lead for private land within the project area. It is anticipated CSSRI will be asking for assistance from CFSC, CalFire, NRCS and USFS with funding.

Project Map:



2019 Lassen County CWPP Work Plan

WUI Area: Ash Valley

Funding: Partially Funded

2019 Implementation

Number of Acres: 500

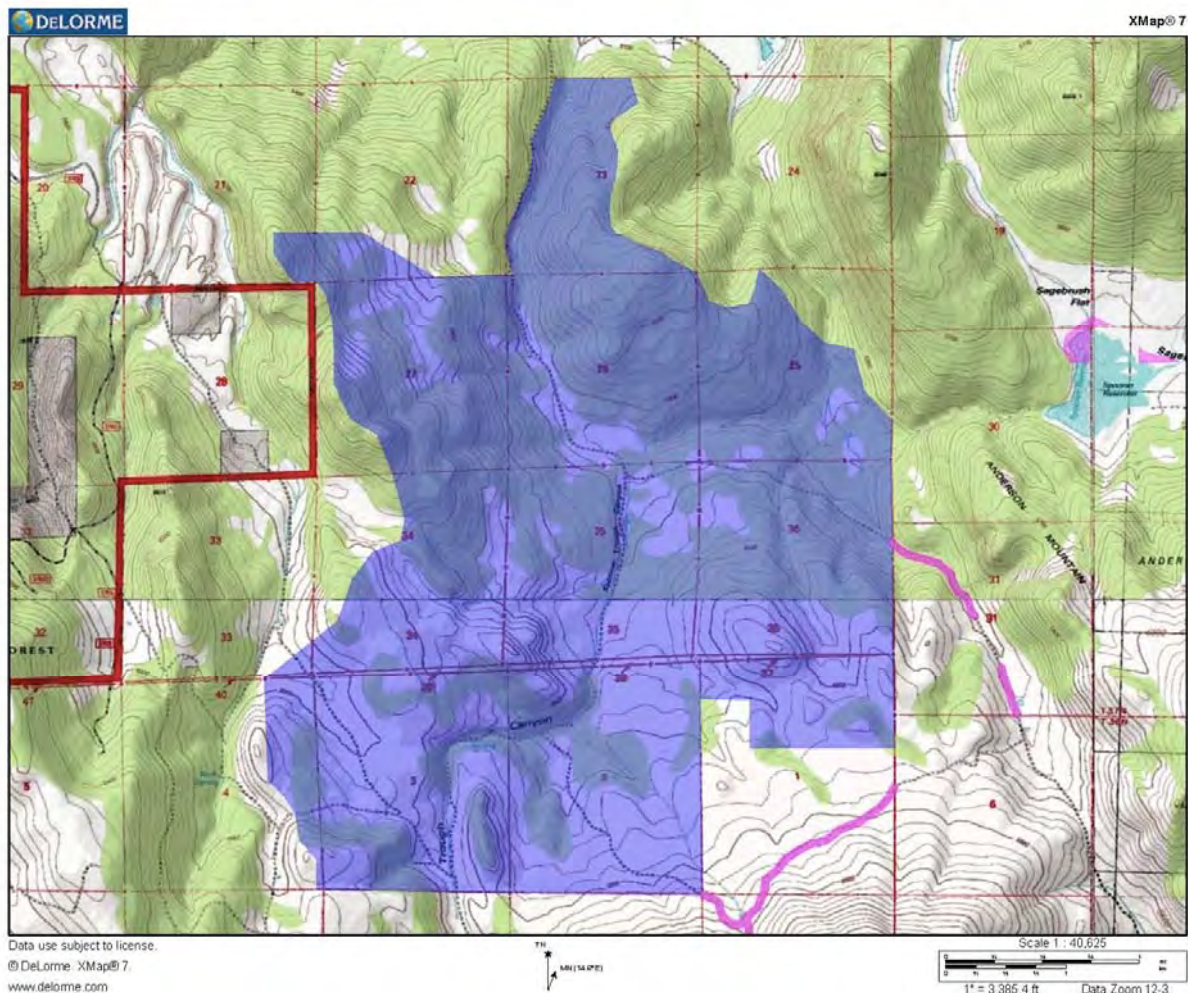
Agency or Agencies: CSSRI, BLM, CALFIRE

Project Name: Ash Valley III Watershed Restoration Project

Project Coordinates: N41.0047 W120.6750

Summary of Project: CSSRI has implementing this watershed restoration project on private and BLM managed land since BLM completed NEPA in 2011. Partial funding has been obtained from Lassen RAC, NRCS, SNC, DWR, USFWS and private landowner contributions. Project connects the BLM South Ash Valley, CSSRI Ash Valley I, II & IV and the CSSRI South Knob projects. Work consists of the removal of invasive juniper through biomass utilization in an effort to reduce hazardous fuel loads and restore the watershed and wildlife habitat. The balance of the mechanical treatments await completion in 2019.

Project Map:



2019 Lassen County CWPP Work Plan

WUI Area: McBride Springs DFPZ

Funding: Planning/Not Funded

2019 Planning

Number of Acres: 743

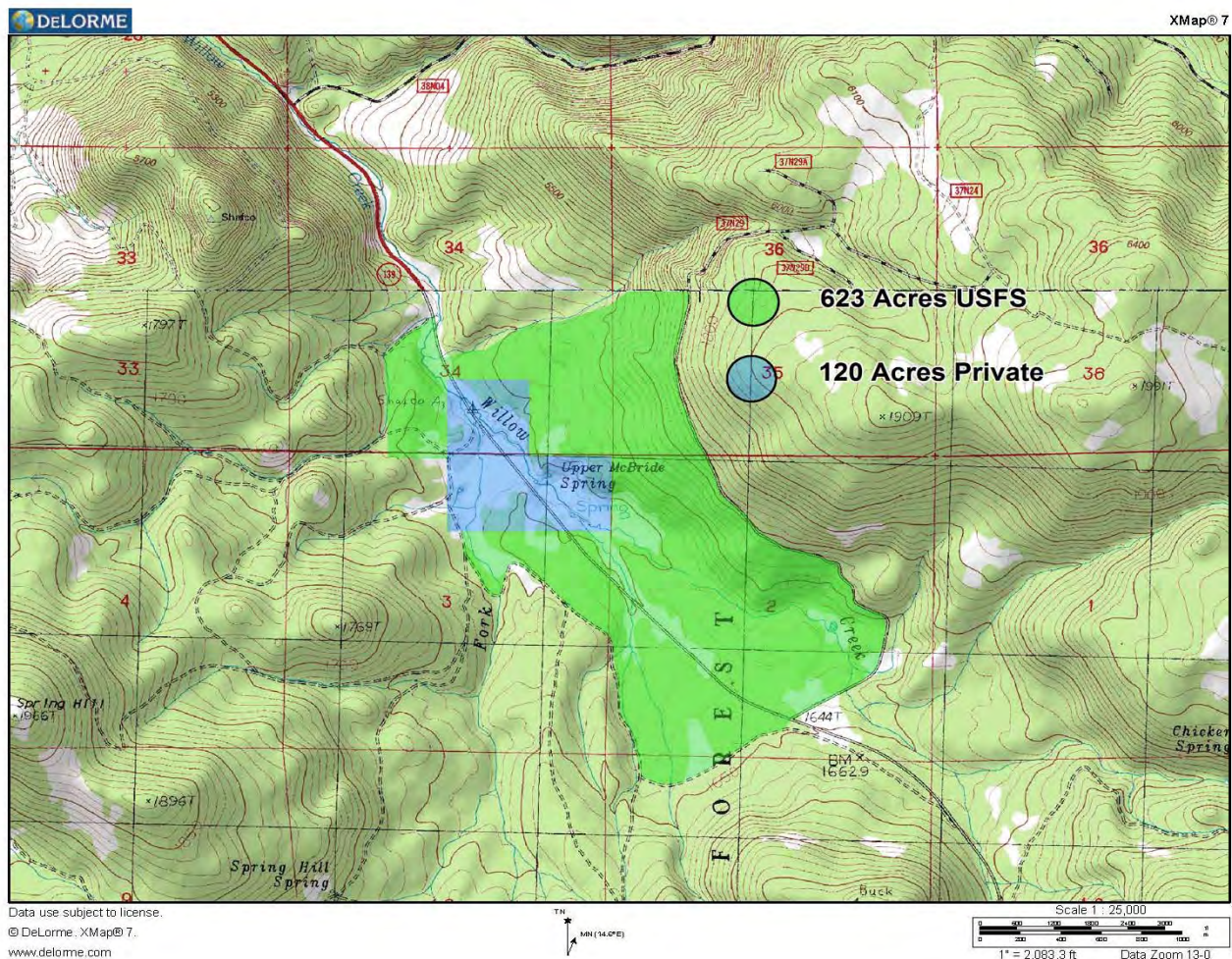
Agency or Agencies: CSSRI, MDF

Project Name: McBride Springs Upland Restoration

Project Coordinates: N40.9919 W120.7978

Summary of Project: CSSRI, through its partners LCFSC & PRCD, and in cooperation with the USFS, will be making applications with various agencies to fund treatments on private and USFS lands. NEPA and CEQA clearance has been underway for some time. In 2011 stream channel restoration work was completed. Planning work has been funded by SNC and CSSRI. Project would restore an important watershed along the Highway 139 corridor. Invasive juniper would be removed through biomass utilization in an effort to reduce hazardous fuel loads and restore the watershed and wildlife habitat. Eastside pine thinning could also occur. Project would be implemented by the Cooperative Sagebrush Steppe Restoration Initiative partnership, with the Pit Resource Conservation District as the lead, and funding partners.

Project Map:



2019 Lassen County CWPP Work Plan

WUI Area: Grasshopper DFPZ

Funding: Partially Funded

2019 Planning

Number of Acres: 2131

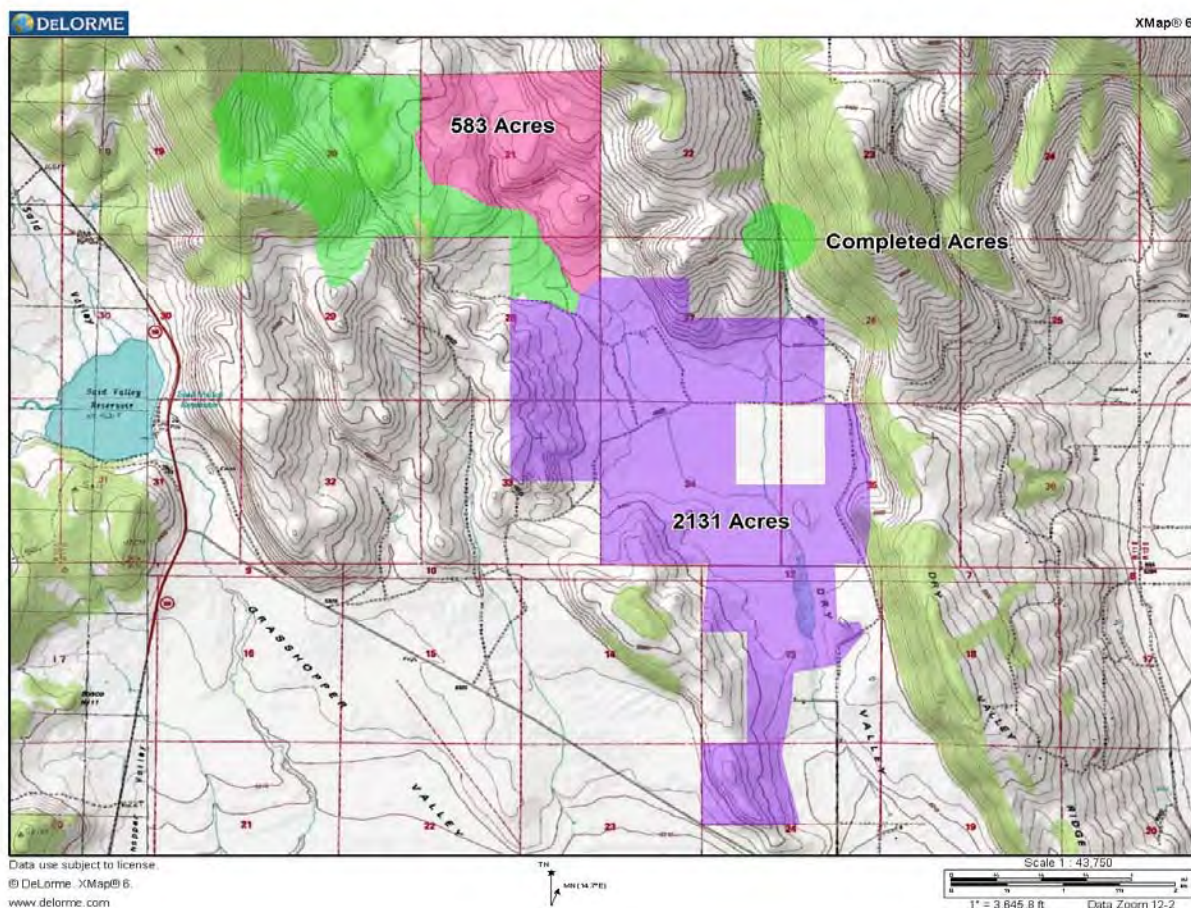
Agency or Agencies: CSSRI

Project Name: McClelland Watershed/Wildlife Habitat Restoration Project

Project Coordinates: N40.9199 W120.7020

Summary of Project: CSSRI, through its partners PRCD & LCFSC, is making applications with various agencies to fund treatments on McClelland Ranch private lands in North Grasshopper Valley. The 583 acre portion of the project identified in the map below was completed in 2012. Project connects with the CSSRI South Knob projects. Work consists of the removal of invasive juniper through biomass utilization in an effort to reduce hazardous fuel loads and restore the watershed and wildlife habitat.

Project Map:



Lassen County Community Wildfire Protection Plan
BLM Eagle Lake Field Office
2019 Annual Work Plan Summary Narrative

The Eagle Lake Field Office currently has Hazardous Fuels Reduction/Ecosystem Restoration, projects planned or ongoing in Lassen County. The purpose and benefits of these projects are community and resource protection, wildlife habitat improvement, rangeland improvement and ecosystem restoration.

Middle Creek Steppe Restoration Project. The BLM in conjunction with NRCS proposes to reduce high densities of western juniper within an approximately 2,400 acre project area on both federal and private land. The project is designed to decrease the probability of large catastrophic wildfires and improve wildlife habitat. All of the work has been put out to contract. Work began last year and will resume during the spring of 2019 as soon as weather and ground conditions allow.

Little Cleghorn. The BLM proposes to reduce the density of Jeffrey pine northwest of Eagle Lake (see Map). The primary objectives are to reduce the risk of high severity wildfire in the naturally regenerated stand and to increase spacing between trees. The secondary benefits include improving wildlife habitat by increasing the biodiversity of understory vegetation and enhancing forest stand resilience to insects and disease. The contract was awarded in September and work is scheduled from spring of 2018 to spring of 2020. The primary treatment method will be mechanized thinning with biomass and sawtimber removal.

Fredonyer Hazardous Fuels Reduction Project. Fredonyer Hazardous Fuels Reduction Project. The BLM proposes to reduce high densities of hazardous fuels caused by overly dense stands that are experiencing a high percentage of mortality due to a root rot pathogen, tussock moth defoliation, and extended drought. Approximately 450 acres will be heavily thinned to remove dead and dying trees. Following treatment the area may be planted with Jeffrey pine (*Pinus jeffreyi*) that is resistant to the root rot pathogen, tussock moths, and more drought resistant.

Phase I* Juniper Reduction The BLM Eagle Lake Office is proposing to shift its focus from expensive large scale mechanical reduction of juniper towards a proactive approach of preventing juniper encroachment by removing them with more fiscally viable low impact methods while they are still in Phase I of their spread. This is in hopes of preventing widespread encroachment with habitat degradation and heavy fuel build up into sage brush and sage steppe habitats. The focus will begin in priority sage-grouse habitat with active leks and riparian areas and expand from there. **Phase I* projects include Black Mountain, Shinn Ranch, and Spanish and Madeline Connectivity.**

* Phase I is the early stage of juniper encroachment. It is defined by Miller et al, (2005) as an area where juniper is actively encroaching on sagebrush ecosystems. Juniper crown canopy is less than 10 percent. On dominant trees terminal and lateral leader growth is greater than 10 centimeters (cm) annually. On understory trees terminal leader growth is greater than 10 cm and lateral leader growth is greater than 8 cm annually. Crown lift is absent. The understory is still fully intact. Potential berry production is low and tree recruitment is active. It is common for Phase I sites to occur in patches of small trees up to 16 feet tall on rangelands; some areas can contain one or two single trees.

Below is a chart that briefly describes the three phases of juniper encroachment into sagebrush ecosystems.

Rate of Encroachment	% Canopy Cover	Leader Growth	Understory	Berry Production	Young Tree Recruitment
Phase I	< 10%	> 10 cm terminal > 8 cm lateral	Fully Intact	none	Active
Phase II	10-30%	> 10 cm	Thinning	Moderate to High	Active
Phase III	≥ 30 %	> 10cm terminal < 5 cm on lateral	Sparse to absent	High	Limited

2019 Lassen County CWPP Work Plan

WUI Area: Non-WUI

Funding: Funded

2019 Implementation

Number of Acres: 500

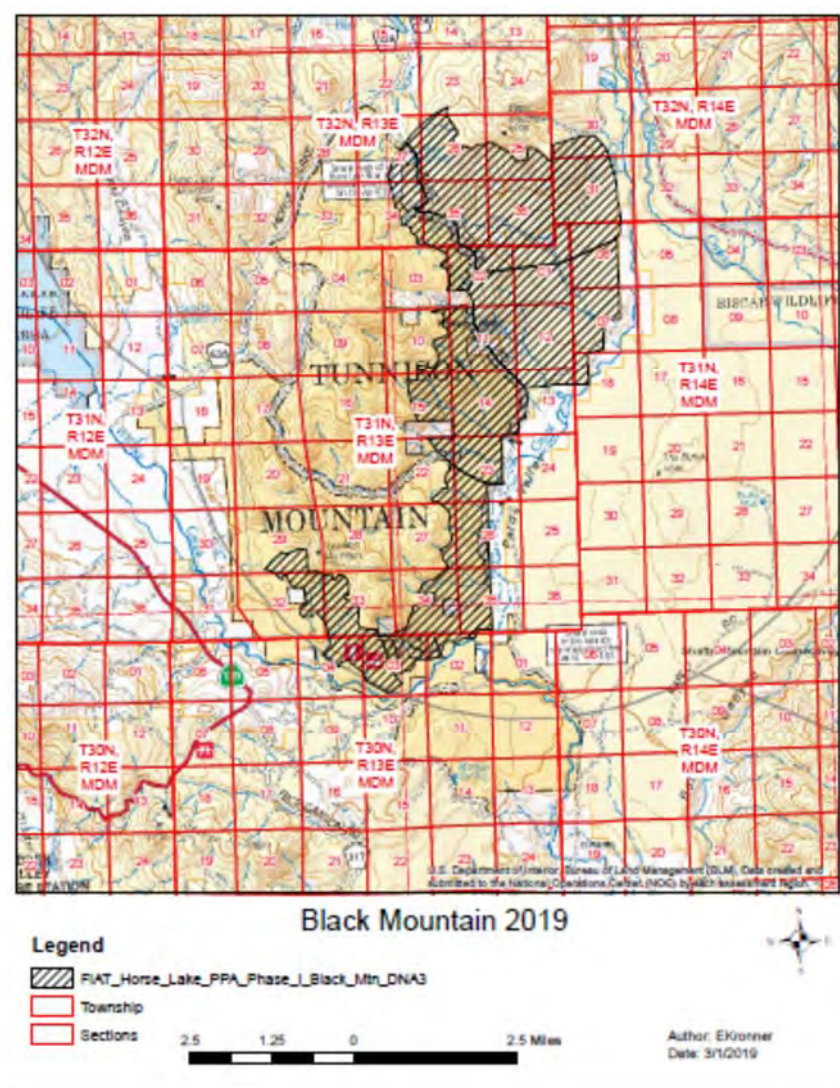
Agency or Agencies: BLM

Project Name: Black Mountain

Project Coordinates: -120.48300 40.50500

Summary of Project: This project is one of many treatments as a result of our efforts to implement a landscape level Phase 1 Juniper removal effort on the ELFO. This project will consist of ~500 acres of Phase 1 juniper Lop and Scatter in support of Sagegrouse habitat restoration/conservation.

Project Map:



2019 Lassen County CWPP Work Plan

WUI Area: Non-Wui

Funding: Partially Funded

2019/2020 Implementation

Number of Acres: 450

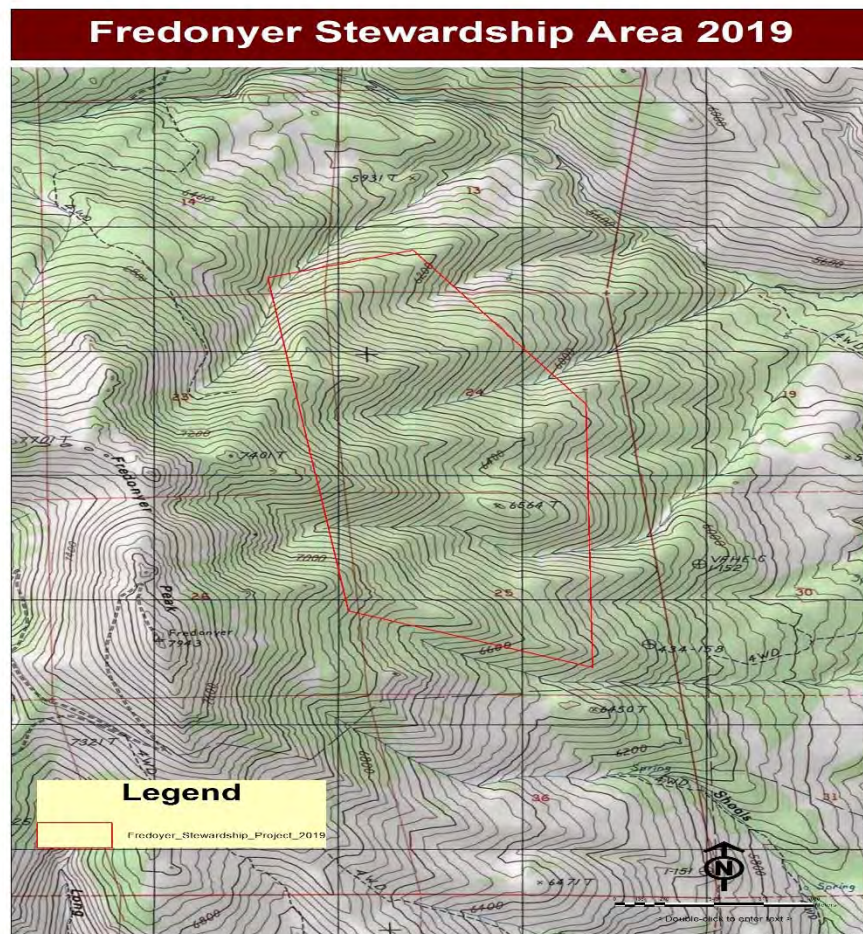
Agency or Agencies: BLM

Project Name: Fredonyer Hazardous Fuels Reduction Project

Project Coordinates: 40.7008119778 -120.579103557

Summary of Project: Fredonyer Hazardous Fuels Reduction Project. The BLM proposes to reduce high densities of hazardous fuels caused by overly dense stands that are experiencing a high percentage of mortality due to a root rot pathogen, tussock moth defoliation, and extended drought. Approximately 450 acres will be heavily thinned to remove dead and dying trees. Following treatment the area may be planted with Jeffrey pine (*Pinus jeffreyi*) that is resistant to the root rot pathogen, tussock moths, and more drought resistant.

Project Map:



2019 Lassen County CWPP Work Plan

WUI Area: Non-WUI

Funding: Funded

2019 Implementation

Number of Acres: 600

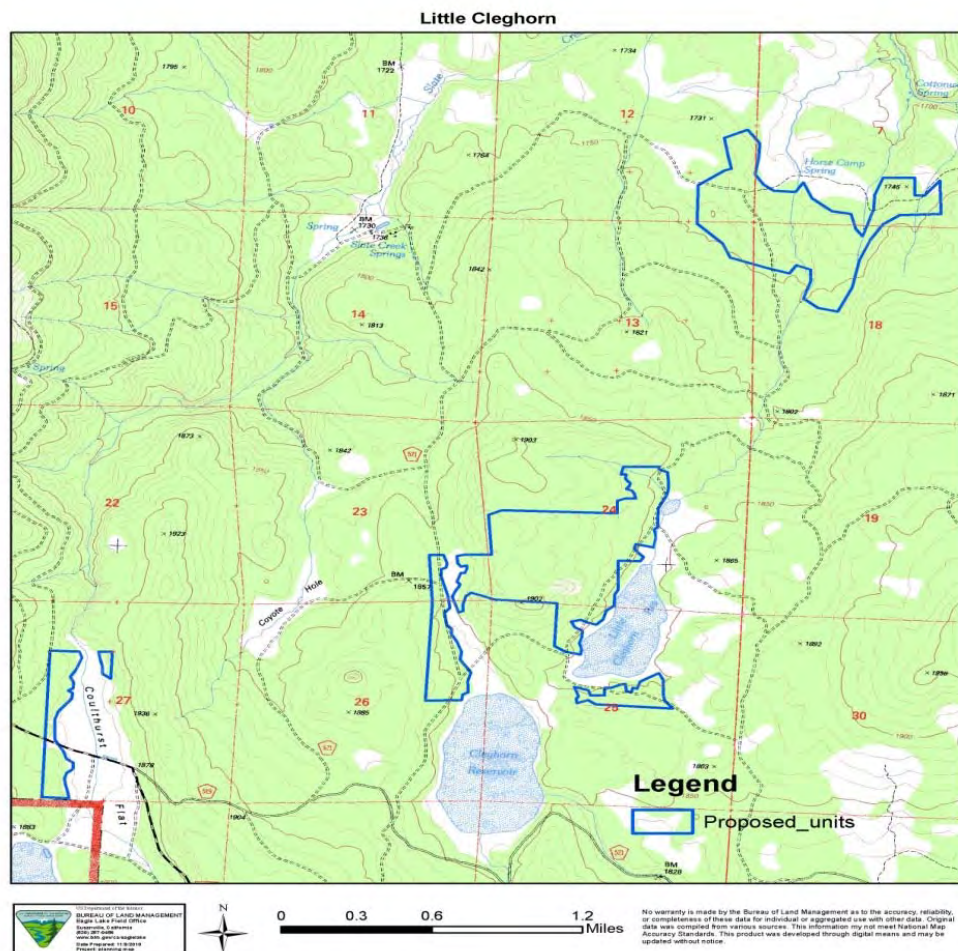
Agency or Agencies: BLM

Project Name: Little Cleghorn

Project Coordinates: 40.78180 120.80095

Summary of Project: The BLM proposes to reduce the density of Jeffrey pine northwest of Eagle Lake (see Map). The primary objectives are to reduce the risk of high severity wildfire in the naturally regenerated stand and to increase spacing between trees. The secondary benefits include improving wildlife habitat by increasing the biodiversity of understory vegetation and enhancing forest stand resilience to insects and disease. The contract was awarded in September and work is scheduled from spring of 2018 to spring of 2020. The primary treatment method will be mechanized thinning with biomass and sawtimber removal.

Project Map:



2019 Lassen County CWPP Work Plan

WUI Area: Non-WUI

Funding: Funded

2019 Implementation

Number of Acres: 2400

Agency or Agencies: BLM and NRCS

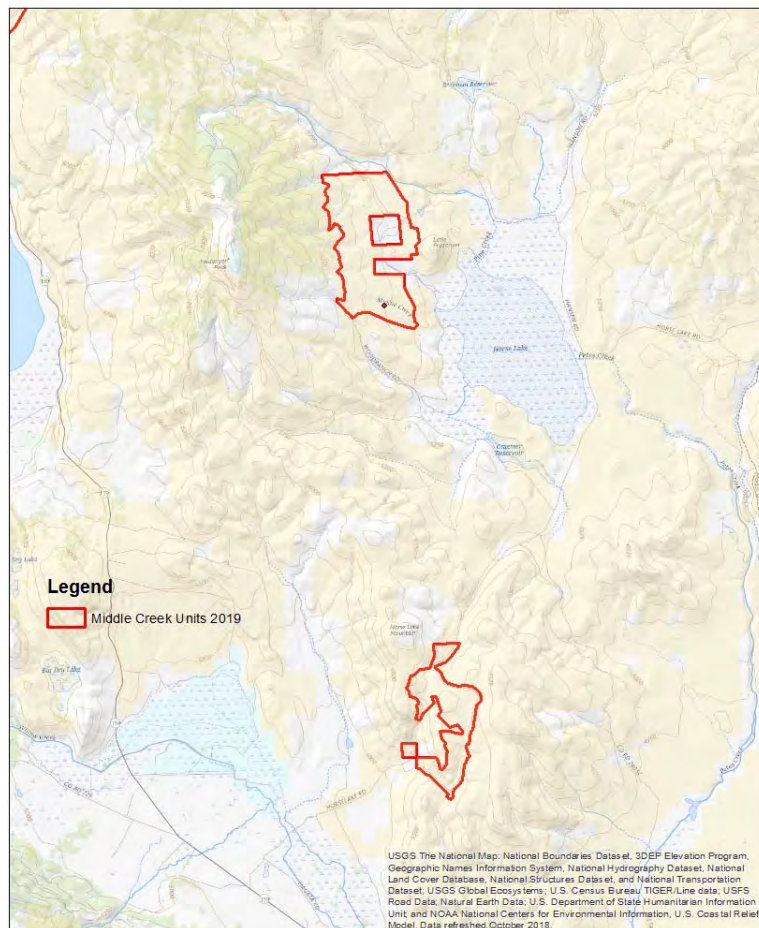
Project Name: Middle Creek Stewardship

Project Coordinates: 40.6777753 -120.55180

Summary of Project: The BLM in conjunction with NRCS proposes to reduce high densities of western juniper within an approximately 2,400 acre project area on both federal and private land. The project is designed to decrease the probability of large catastrophic wildfires and improve wildlife habitat. All of the work has been put out to contract. Work began last year and will resume during the spring of 2019 as soon as weather and ground conditions allow.

Project Map:

Middle Creek Stewardship Units 2019



2019 Lassen County CWPP Work Plan

WUI Area: Non-WUI

Funding: Funded

2019 Implementation

Number of Acres: 500

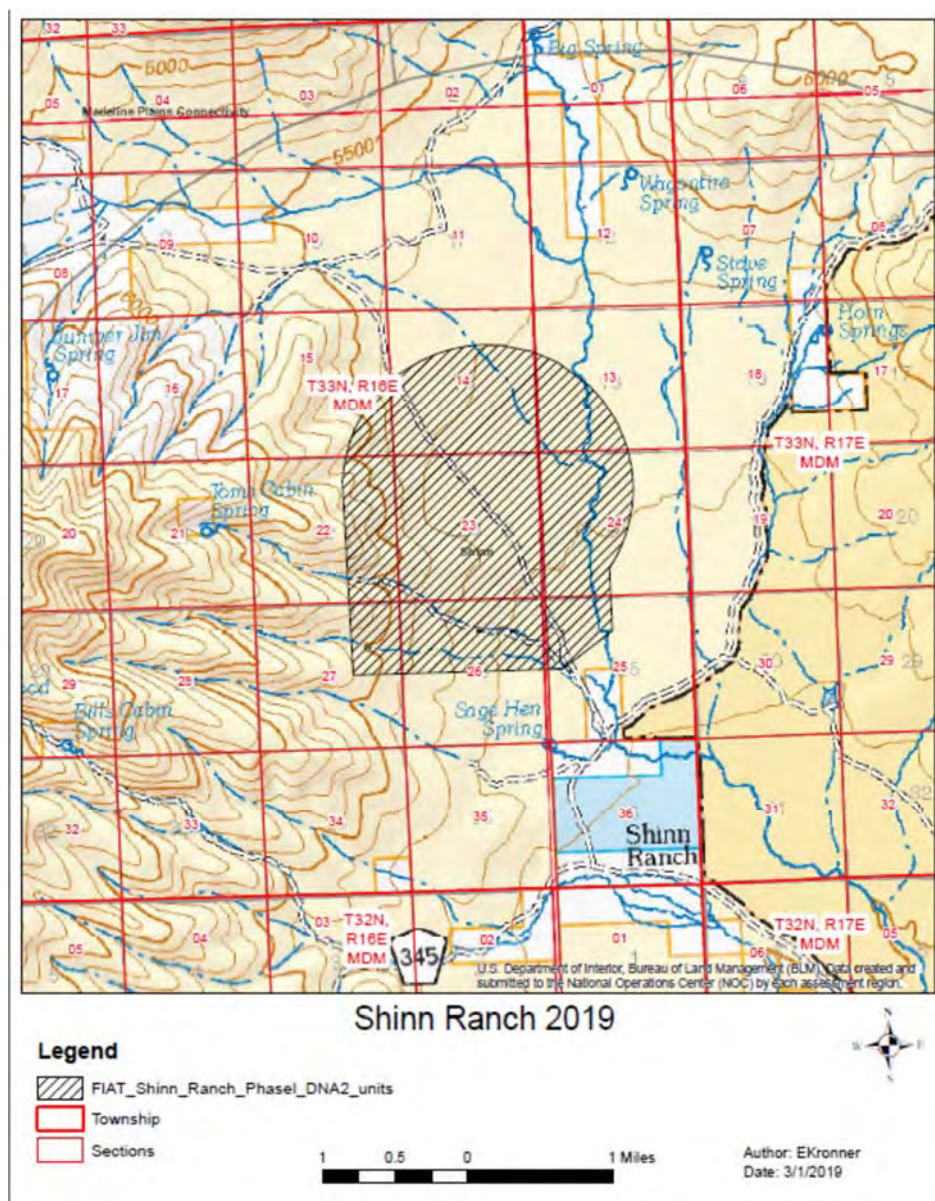
Agency or Agencies: BLM

Project Name: Shinn Ranch

Project Coordinates: -120.13200 40.71000

Summary of Project: This project is one of many treatments as a result of our efforts to implement a landscape level Phase 1 Juniper removal effort on the ELFO. This project will consist of ~500 acres of Phase 1 juniper Lop and Scatter in support of Sagegrouse habitat restoration/conservation.

Project Map:



2019 Lassen County CWPP Work Plan

WUI Area: Non-WUI

Funding: Funded

2019 Implementation

Number of Acres: 300

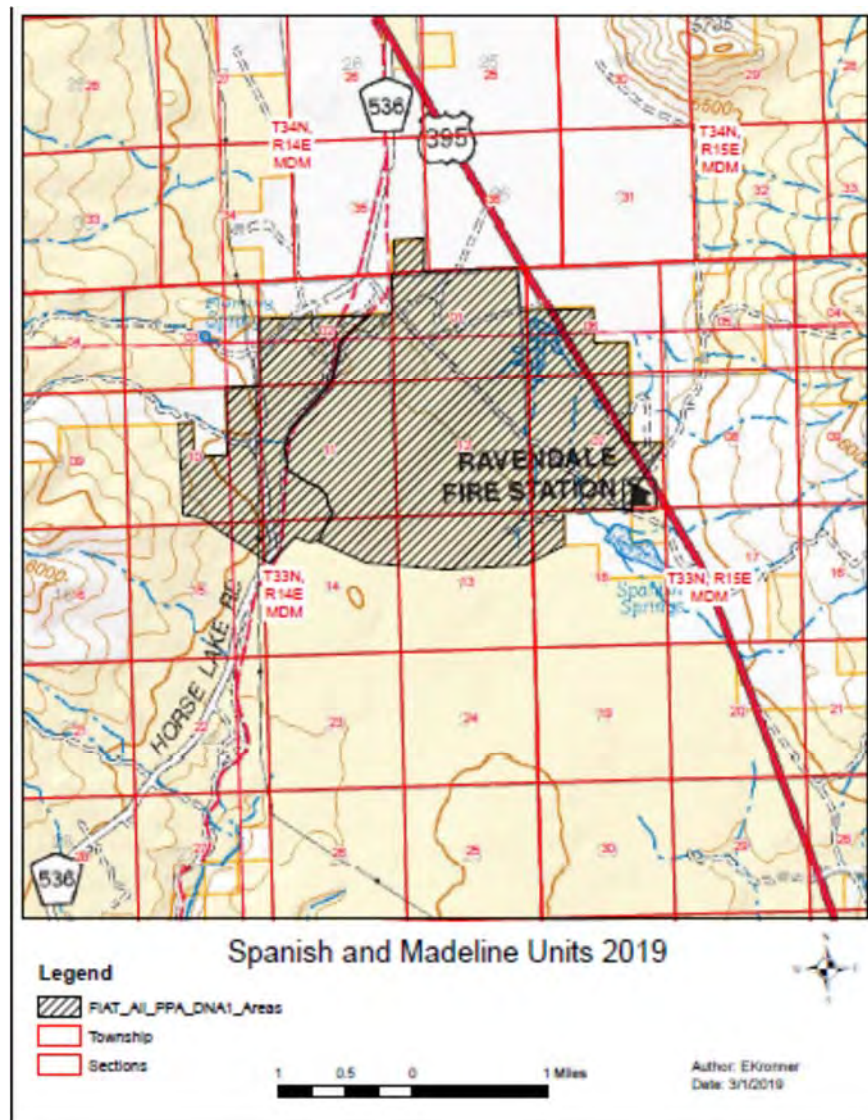
Agency or Agencies: BLM

Project Name: Spanish and Madeline Units

Project Coordinates: -120.34000 40.74000

Summary of Project: This project is one of many treatments as a result of our efforts to implement a landscape level Phase 1 Juniper removal effort on the ELFO. This project will consist of ~400 acres of Phase 1 juniper Lop and Scatter in support of Sagegrouse habitat restoration/conservation.

Project Map:



2019 Lassen County CWPP Work Plan

WUI Area: WUI

Funding: Planning/Not Funded

2019 Planning

Number of Acres: 120

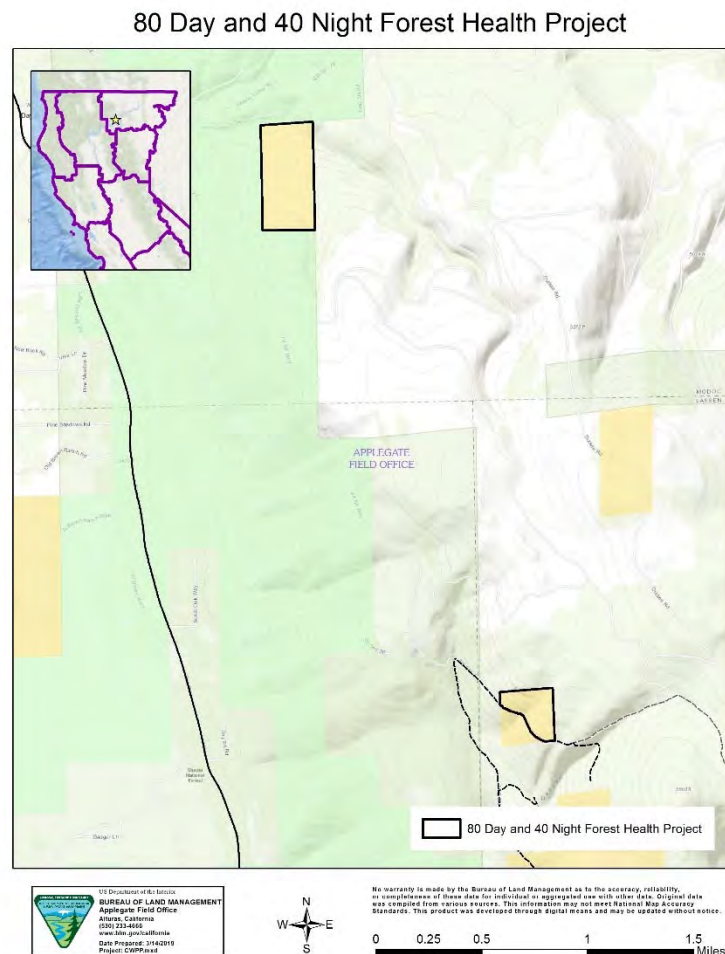
Agency or Agencies: BLM

Project Name: 80 Day and 40 Night Forest Health Project

Project Coordinates: N41.17518 W121.33527

Summary of Project: The purpose of the project is to reduce commercially thin 120 acres to achieve the desired stocking level and to increase health and vigor of the stand. This project is in the initial planning phase and funding has been requested to cover all necessary clearance work and also layout, marking, and cruising costs. Implementation of the project is scheduled for FY20.

Project Map:



2019 Lassen County CWPP Work Plan

WUI Area: Non-WUI

Funding: Funded

2019 Implementation

Number of Acres: 40

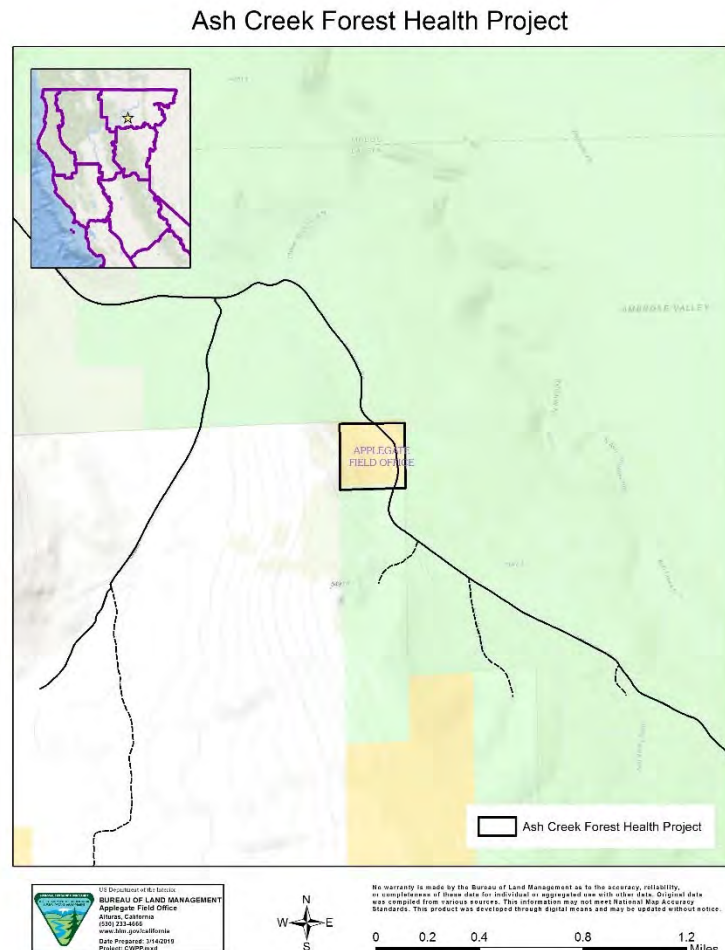
Agency or Agencies: BLM

Project Name: Ash Creek Forest Health Project

Project Coordinates: N41.16726 W120.84924

Summary of Project: The purpose of the project is to reduce commercially thin an overstocked 40 acre pine/cedar/juniper stand to achieve the desired stocking level (approximate basal area of 80 ft²) and to increase health and vigor of the stand. Thinning would be accomplished by hand (e.g. fallers with chainsaws) or by standard mechanized forestry harvesting equipment including rubber and or tracked skidders, feller bunchers, forwarders and medium to small dozers. The the contract will be awarded sometime this spring and operations would likely begin in May or June. Harvesting operations are anticipated to take no more than three weeks to complete. The unit is located near the town of Adin, California. Slash generated from harvesting activities will be piled and burned when conditions permit burning operations to commence. Implementation of this project was delayed due to the completion of other projects.

Project Map:



2019 Lassen County CWPP Work Plan

WUI Area: WUI

Funding: Planning/Not Funded

2019 Planning

Number of Acres: 508

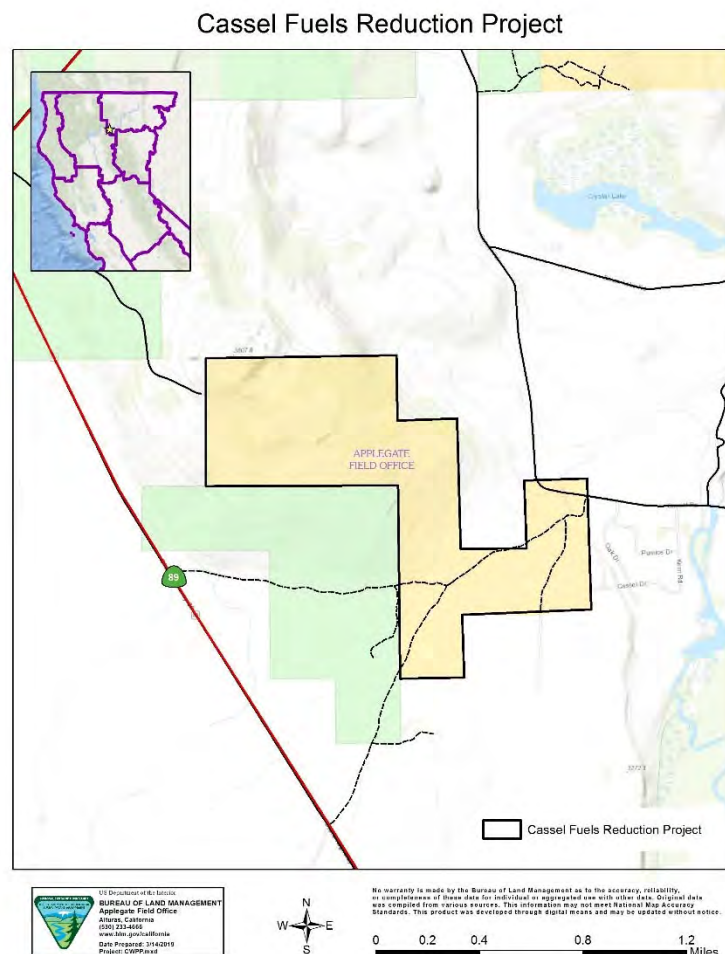
Agency or Agencies: BLM

Project Name: Cassel Fuels Reduction Project

Project Coordinates: N40.92197 W121.57517

Summary of Project: The purpose of this project is to reduce fuel loading adjacent to the community of Cassel, California. Project would most likely utilize a combination of cut-and-pile or mastication to reduce fuel loading or alter fuel arrangement and subsequently alter fire behavior.

Project Map:



2019 Lassen County CWPP Work Plan

WUI Area: WUI

Funding: Planning/Not Funded

2019 Planning

Number of Acres: 2237

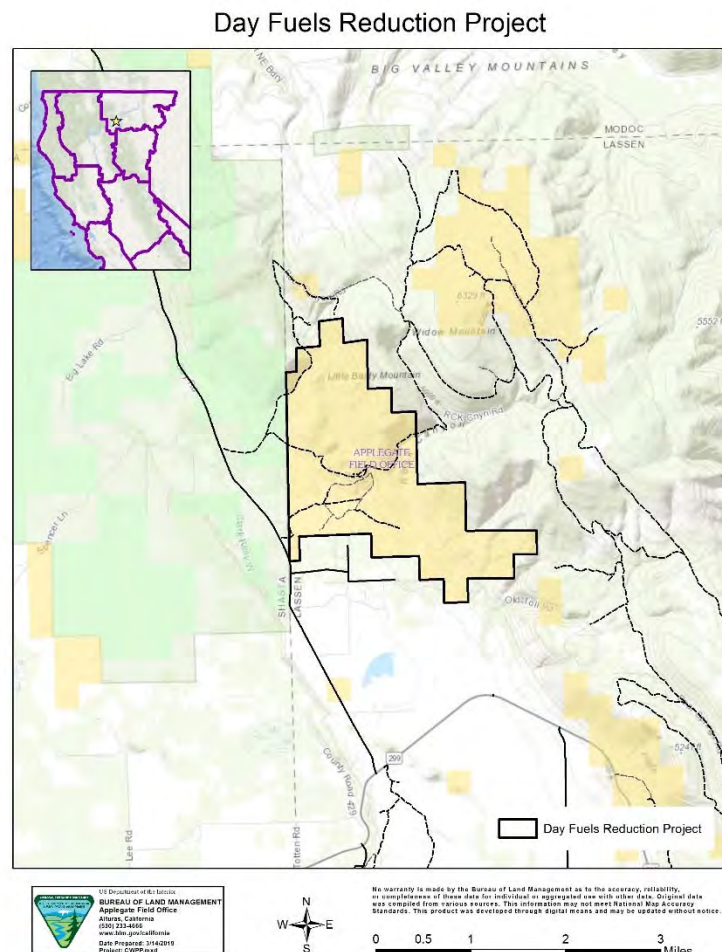
Agency or Agencies: BLM

Project Name: Day Fuels Reduction Project

Project Coordinates: N41.13861 W121.32184

Summary of Project: Project would consist of a combination of mastication, cut-and-pile, commercial sale, and understory burning. This project is located adjacent to the community of Day, California. This project is in the initial planning phase and funding has been requested to cover the initial survey's needed to complete the necessary NEPA documentation. Project implementation will hopefully begin in FY21 and 22.

Project Map:



2019 Lassen County CWPP Work Plan

WUI Area: Non-WUI

Funding: Funded

2019 Implementation

Number of Acres: 1732

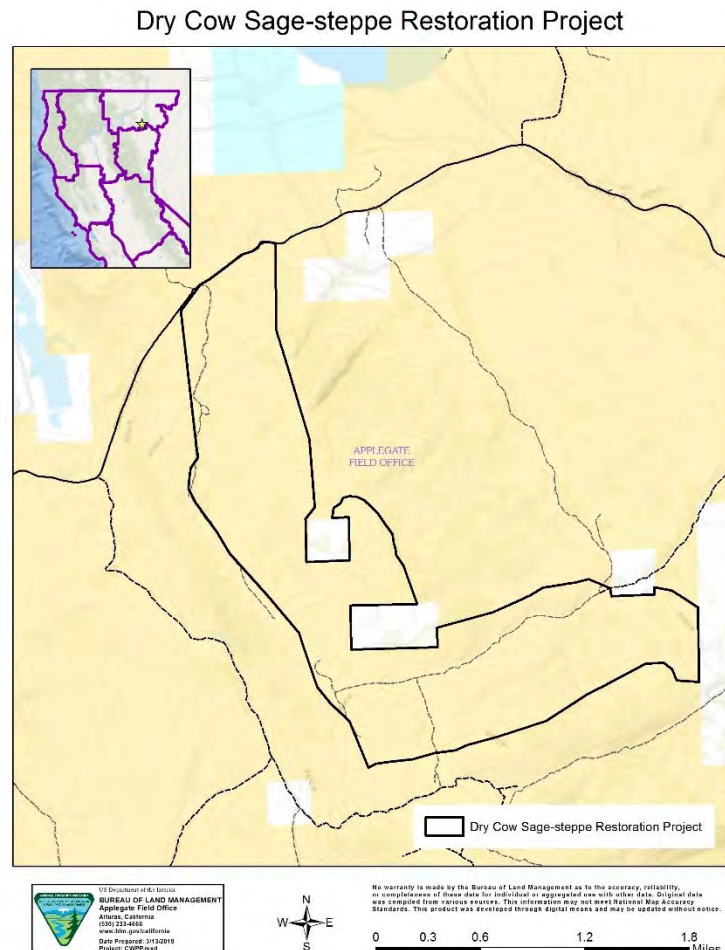
Agency or Agencies: BLM and NRCS

Project Name: Dry Cow Sage-steppe Restoration Project

Project Coordinates: N41.03270 W120.38036

Summary of Project: The purpose of this project is to focus on reducing juniper trees with chainsaws in designated habitat for greater sage-grouse near Madeline, CA. Two treatment methods would be utilized to process the cut juniper trees. Branches on trees in areas with less than 15% juniper canopy cover would be “lopped-and-scattered”. On sites with greater 15% canopy cover the trees would be cut into short lengths and the boles and limbs piled. Treatment will be completed by contractors. Approximately 1,461 acres would be “lopped-and-scattered” and 268 acres would be cut-and-piled within the Dry Cow project area. Piles constructed within the project areas would be burned using BLM fire personnel in the fall or winter of 2019. This project is part of an ongoing series of sage-steppe restoration projects aimed at improving habitat for greater sage-grouse which is a BLM sensitive species.

Project Map:



2019 Lassen County CWPP Work Plan

WUI Area: Non-WUI

Funding: Partially Funded

2019 Implementation

Number of Acres: 1404

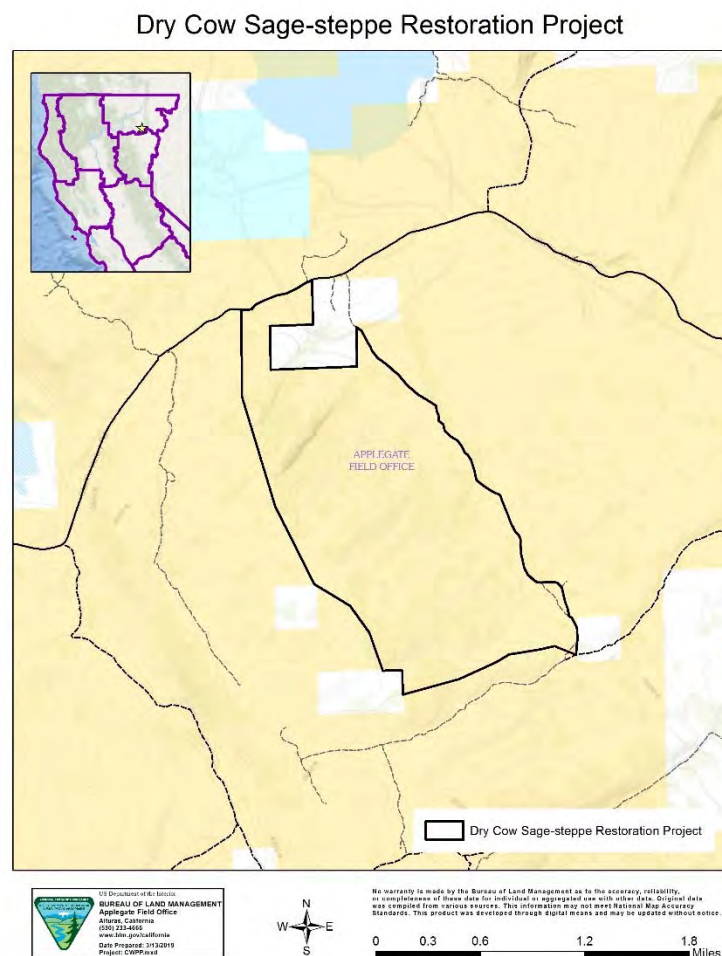
Agency or Agencies: BLM, NRCS, and Cal-Deer

Project Name: Dry Cow Sage-steppe Restoration Project

Project Coordinates: N41.04446 W120.37418

Summary of Project: The purpose of this project is to focus on reducing juniper trees utilizing mechanical equipment in designated habitat for greater sage-grouse. The use of mechanical equipment such as feller-bunchers and rubber tired skidders would be used to reduce juniper densities in areas with canopy cover exceeding 15% and slopes less than 35%. Up to 1405 acres would be treated using mechanical equipment within the Dry Cow project area. This project is part of an ongoing series of sage-steppe restoration projects aimed at improving habitat for greater sage-grouse which is a BLM sensitive species. In addition, this is a joint project between the BLM, NRCS, and Cal-Deer Association.

Project Map:



2019 Lassen County CWPP Work Plan

WUI Area: non-WUI

Funding: Partially Funded

2019 Planning

Number of Acres: 385

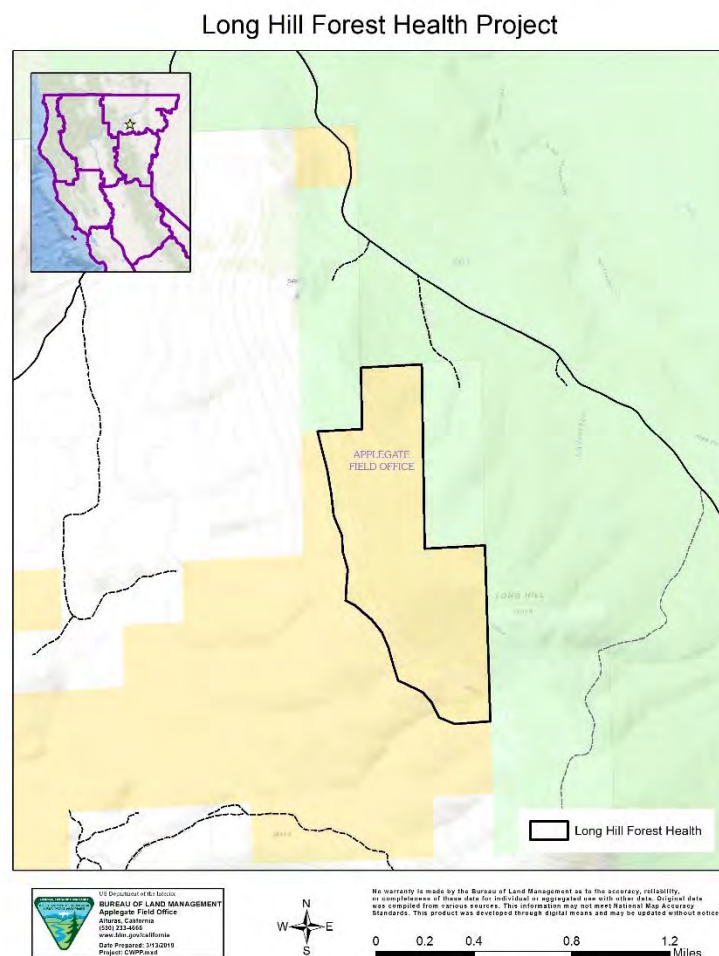
Agency or Agencies: BLM

Project Name: Long Hill Forest Health Project

Project Coordinates: N41.14415 W120.84489

Summary of Project: The purpose of this project is to thin approximately 100 to 120 acres of mid-elevation mixed conifer forest located seven miles southeast of Adin, California. In addition, approximately 260 acres of juniper will be either cut-and-piled or loped-and-scattered depending on canopy cover. Machine and hand piles will then be burned using agency fire personnel. This project is part of a series of planned projects within the Adin area to address wildfire concerns adjacent to the surrounding communities. In addition, this project also aims to improve habitat for pronghorn and mule deer. The Environmental Assessment (EA) will be completed in FY20 and initial project implementation is planned for FY21.

Project Map:



2019 Lassen County CWPP Work Plan

WUI Area: non-WUI

Funding: Partially Funded

2019 Implementation

Number of Acres: 2435

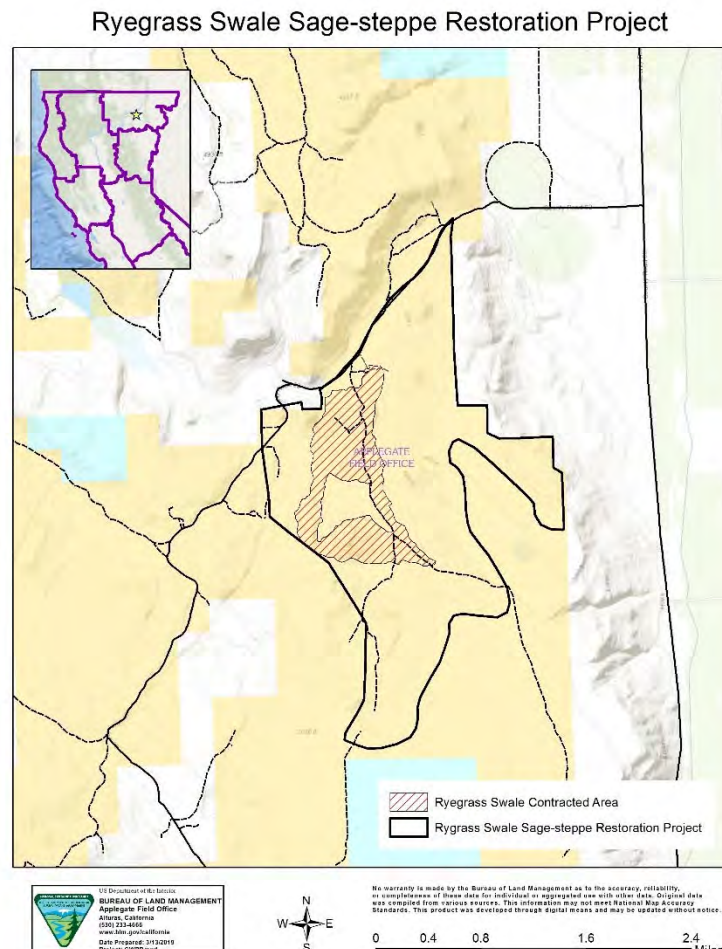
Agency or Agencies: BLM, NRCS, and Cal-Deer

Project Name: Ryegrass Swale Sage-steppe Restoration Project

Project Coordinates: N41.33888 W120.60288

Summary of Project: The purpose of this project is to reduce juniper cover in designated habitat for mule deer, pronghorn, and greater sage-grouse. Mechanical equipment would be utilized to cut and skid material to a landing to be chipped or piled into doodle bundles to be burned by agency fire staff at a later date. The use of mechanical equipment such as feller-bunchers and rubber tired skidders may be used to reduce juniper densities in areas with canopy cover exceeding 15% and slopes less than 30%. This project is in the initial planning phase and will hopefully be implemented in FY20. Funding requests were made in FY19 to cover all project clearances and to also complete the required NEPA documentation. This project will be a joint funded project between the BLM, NRCS, and Cal-Deer.

Project Map:



2019 Lassen County CWPP Work Plan

WUI Area: Non-WUI

Funding: Planning/Not Funded

2019 Planning

Number of Acres: 648

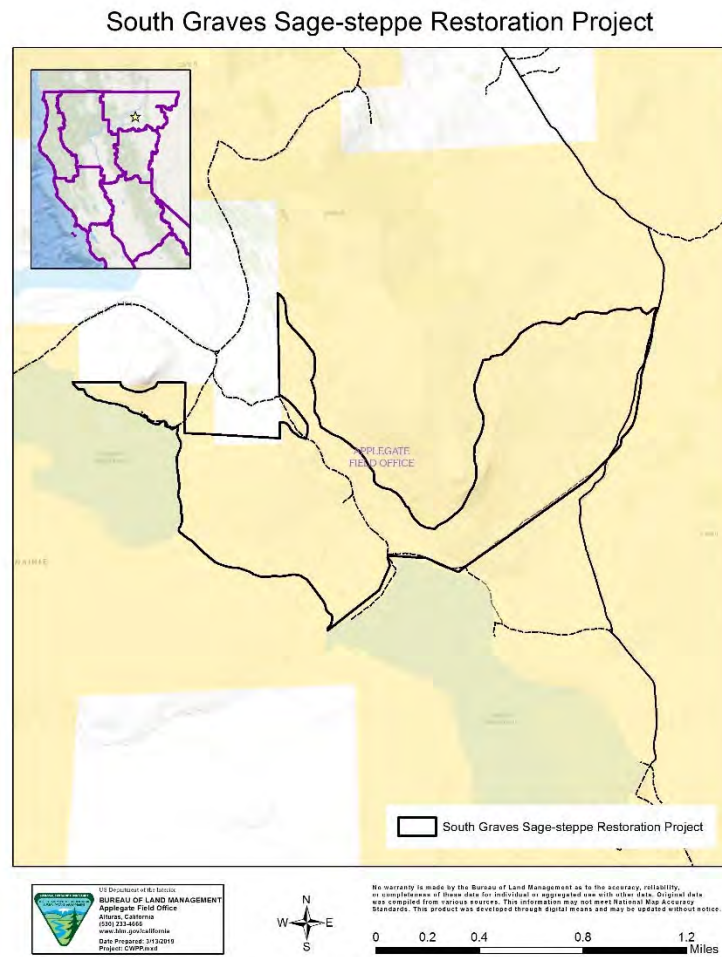
Agency or Agencies: BLM, NRCS, and Cal-Deer

Project Name: South Graves Sage-steppe Restoration Project

Project Coordinates: N41.28195 W120.63728

Summary of Project: The purpose of this project is to reduce juniper cover in designated habitat for mule deer, pronghorn, and greater sage-grouse. Mechanical equipment would be utilized to cut and skid material to a landing to be chipped or piled into doodle bundles to be burned by agency fire staff at a later date. This project is in the initial planning phase and will hopefully be implemented in FY21. Funding requests were made in FY19 to cover all project clearances and to also complete the required NEPA documentation. This project will be a joint funded project between the BLM, NRCS, and Cal-Deer.

Project Map:



2019 Lassen County CWPP Work Plan

WUI Area: WUI

Funding: Planning/Not Funded

2019 Planning

Number of Acres: 650

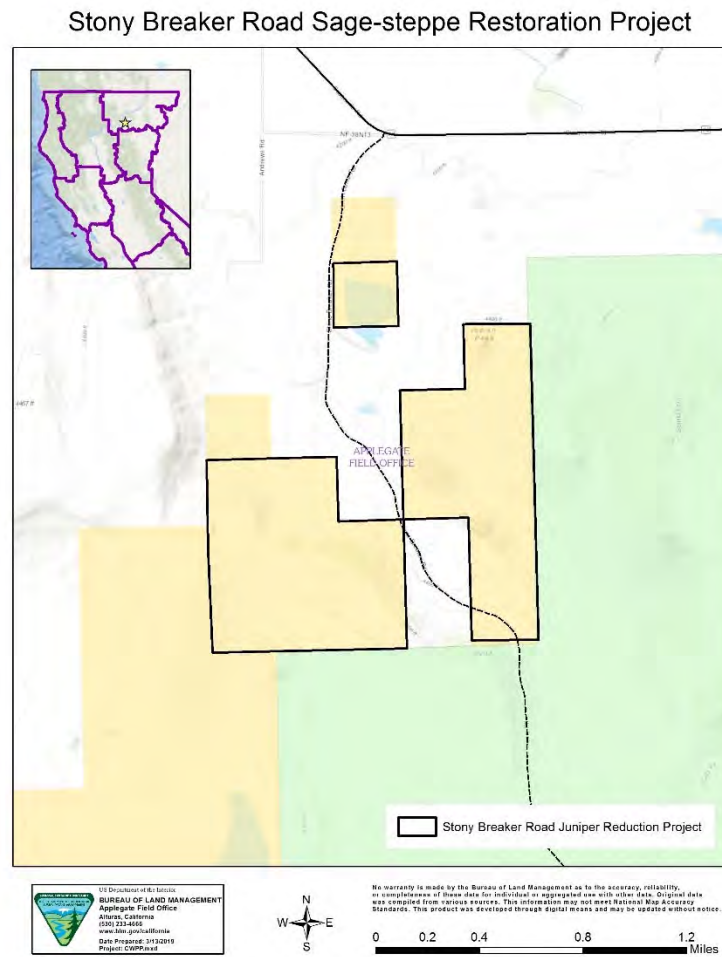
Agency or Agencies: BLM, NRCS, Cal-Deer, and Pit River RCD

Project Name: Stony Breaker Road Juniper Reduction Project

Project Coordinates: N41.10594 W121.03499

Summary of Project: The purpose of this project is to reduce juniper in pronghorn and mule deer habitat and to reduce wildfire threats near Bieber, California. Mechanical equipment would be utilized to cut and skid material to a landing to be chipped or piled into doodle bundles to be burned by agency fire staff at a later date. This project is in the initial planning phase and will hopefully be implemented in FY20. Funding requests were made in FY19 to cover all project clearances and to also complete the required NEPA documentation. This project will be a joint funded project between the BLM, NRCS, Cal-Deer, and Pit River RCD.

Project Map:



2019 Lassen County CWPP Work Plan

WUI Area: non-WUI

Funding: Funded

2019 Implementation

Number of Acres: 492

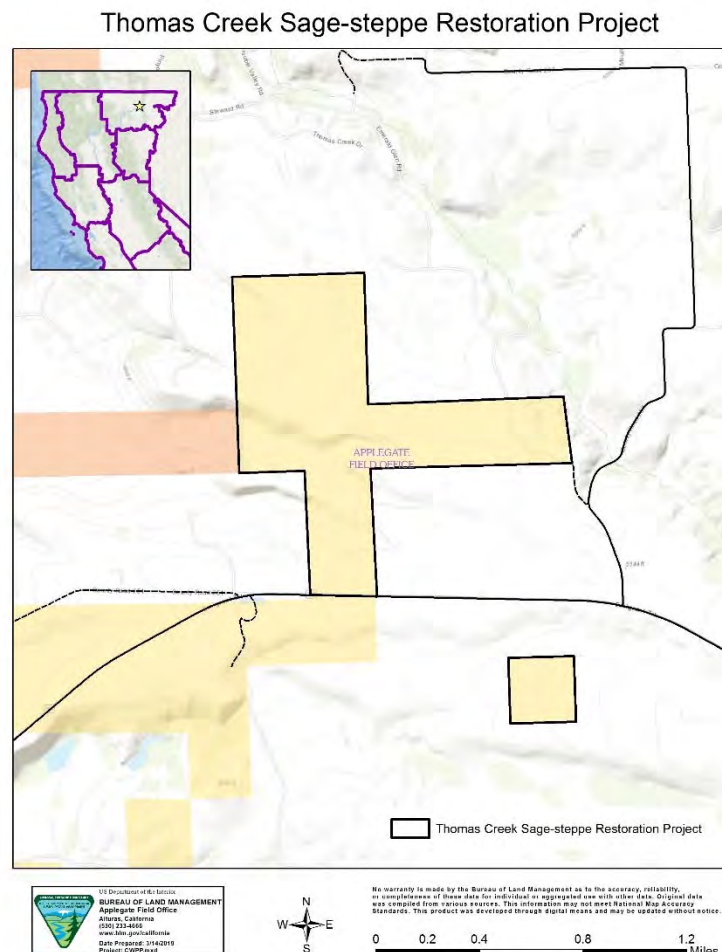
Agency or Agencies: BLM, NRCS, and Cal-Fire

Project Name: Thomas Creek Sage-steppe Restoration Project

Project Coordinates: N41.57157 W120.39628

Summary of Project: The purpose of this project is to focus on reducing juniper trees with chainsaws in designated habitat for greater sage-grouse near Madeline, CA. Two treatment methods would be utilized to process the cut juniper trees. Branches on trees in areas with less than 15% juniper canopy cover would be “lopped-and-scattered”. On sites with greater 15% canopy cover the trees would be cut into short lengths and the boles and limbs piled. Treatment will be completed by contractors. Approximately 340 acres would be “lopped-and-scattered” and 163 acres would be cut-and-piled within the Thomas Creek project. Piles constructed within the project areas would be burned using BLM fire personnel in the fall or winter of 2019. This project is part of an ongoing series of sage-steppe restoration projects aimed at improving habitat for greater sage-grouse which is a BLM sensitive species.

Project Map:



2019 Lassen County CWPP Work Plan

WUI Area: Non-WUI

Funding: Funded

2019 Implementation

Number of Acres: 2436

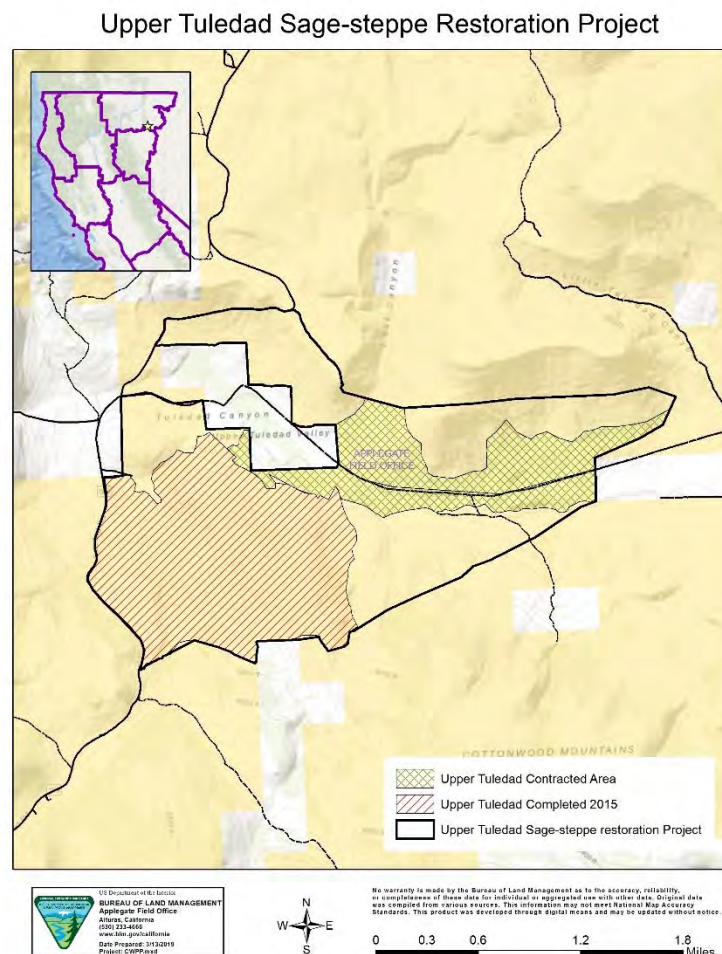
Agency or Agencies: BLM, NRCS, and Cal-Deer

Project Name: Upper Tulestad Sage-steppe Restoration Project

Project Coordinates: N41.02132 W120.06288

Summary of Project: The purpose of this project is to reduce juniper cover in designated habitat for mule deer, pronghorn, and greater sage-grouse. Mechanical equipment would be utilized to cut and skid material to a landing to be chipped or piled into doodle bundles to be burned by agency fire staff at a later date. A portion of the project was treated in 2015 and another portion of the overall project area is scheduled to be completed in FY19 and 20. This project will be a joint funded project between the BLM, NRCS, and Cal-Deer.

Project Map:



2019 Lassen County CWPP Work Plan

WUI Area: Non-WUI

Funding: Funded

2019 Implementation

Number of Acres: 100

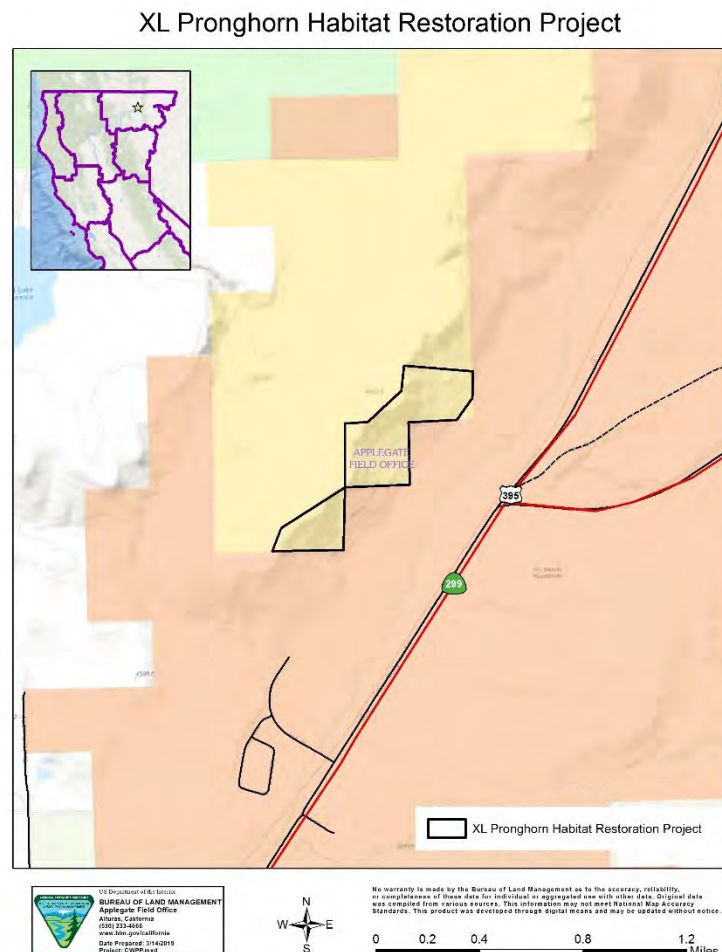
Agency or Agencies: BLM

Project Name: XL Pronghorn Habitat Restoration Project

Project Coordinates: N41.54303 W120.46954

Summary of Project: The purpose of this project is to improve habitat for pronghorn and to also reduce the risk of predation by reducing tree cover in an active migration corridor. Approximately 47 acres would be lopped-and-scattered and 53 acres would be cut-and-pilled. Piles would then be burned using agency fire personnel. This project is scheduled to be implemented between 2019 and 2020.

Project Map:



2019 Lassen County CWPP Work Plan

WUI Area: Susanville and Janesville

Funding: Partially Funded

2019 Implementation

Number of Acres: 2560

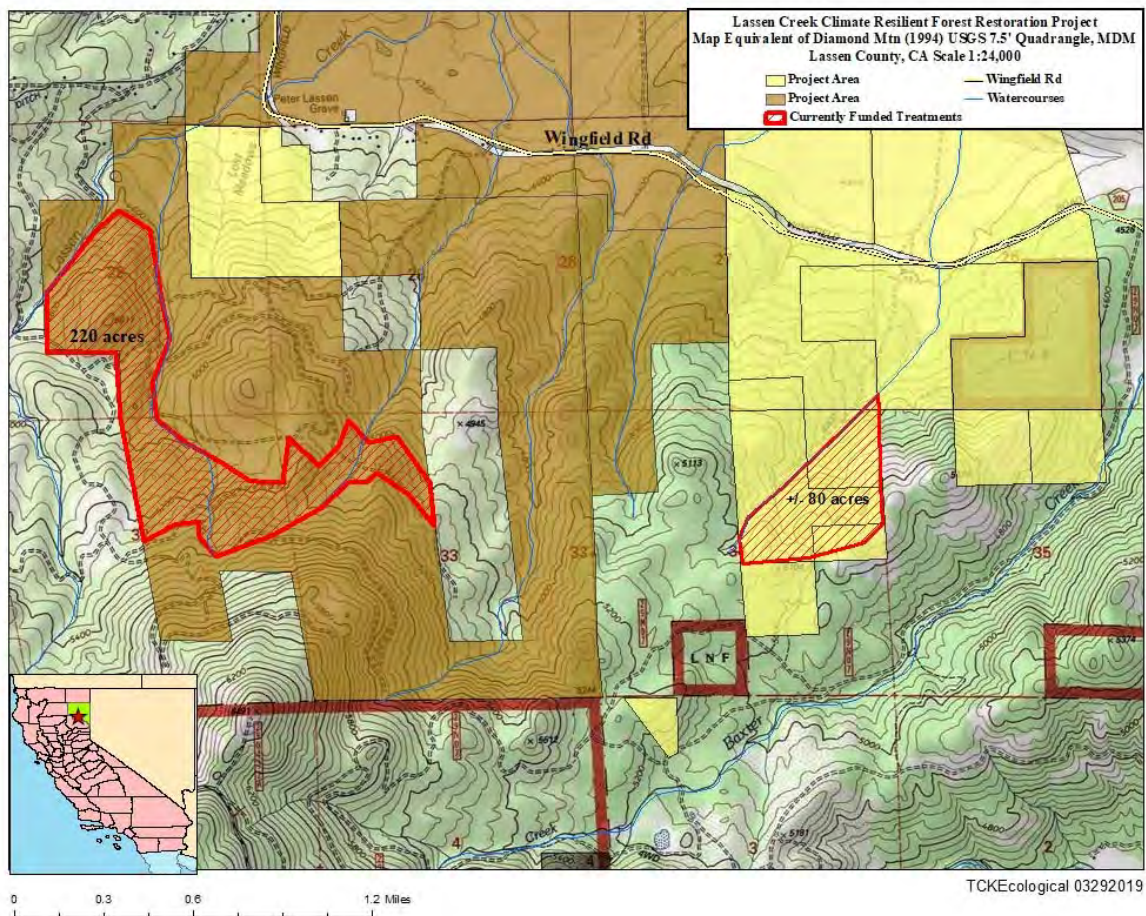
Agency or Agencies: Honey Lake Valley Resource Conservation District (RCD)

Project Name: Lassen Creek Climate Resilient Forest Restoration Project

Project Coordinates: 40.3376 -120.6234

Summary of Project: The Honey Lake Valley RCD has received partial funding for this project. We are seeking funds to continue implementing fuel reduction projects (mechanical thinning, hand thinning, mastication, pruning, piling/burning, prescribed fire) within the project area that create a fire resilient forest that is still capable of producing timber at maximum sustained yield while retaining ecosystem function for wildlife and the watershed and providing a landscape level fire break for the Susanville and Janesville communities.

Project Map:



2019 Lassen County CWPP Work Plan

WUI Area: Close to Spalding

Funding: Planning/Not Funded

2019 Planning

Number of Acres: Approx. 3,000

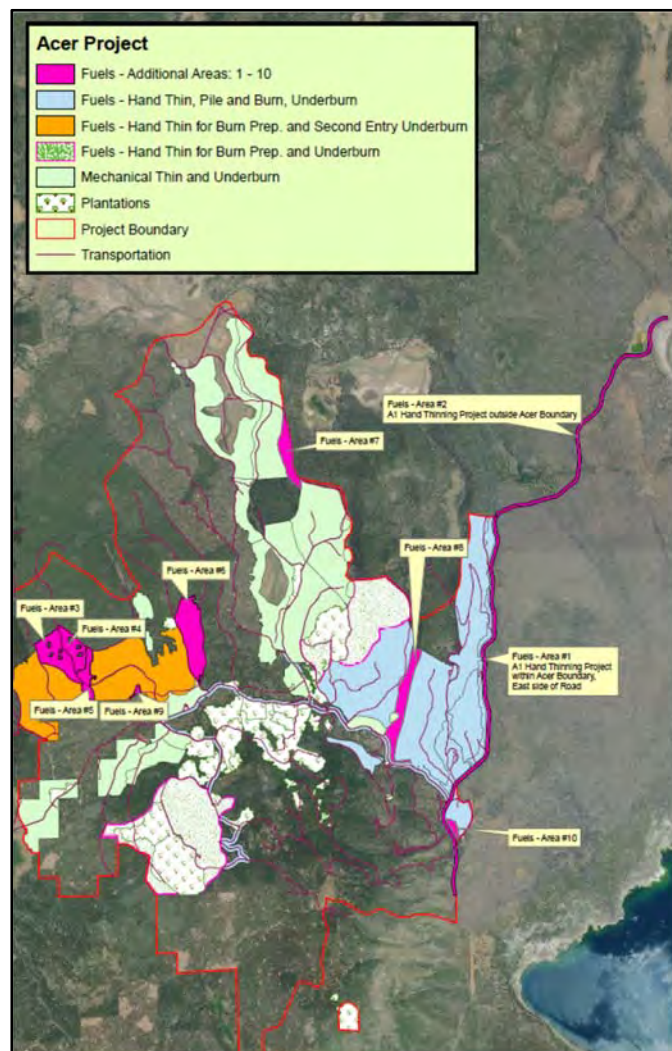
Agency or Agencies: USFS

Project Name: Acer Project

Project Coordinates: N40.65973 W120.88660

Summary of Project: A portion of the Acer Project burned in the Whaleback Fire, the project area is currently getting revised, and the map below shows project area before the fire. The desired conditions for the Acer Project area include: 1) healthy forest conditions that are characterized by more open forested stands dominated by fire-resilient tree species, reduced surface fuel loads and ladder fuels where periodic low-intensity surface fires can be re-introduced and where wildfires can be safely fought, 2) forest areas with reduced tree densities that decrease risk of mortality from insects, drought, and disease, 3) functioning aspen, meadow and riparian systems which contribute to landscape biodiversity, and 4) cost effective treatments that contribute to community stability.

Project Map:



2019 Lassen County CWPP Work Plan

WUI Area: DFPZ

Funding: Planning/Not Funded

2019 Planning

Number of Acres: 9,215

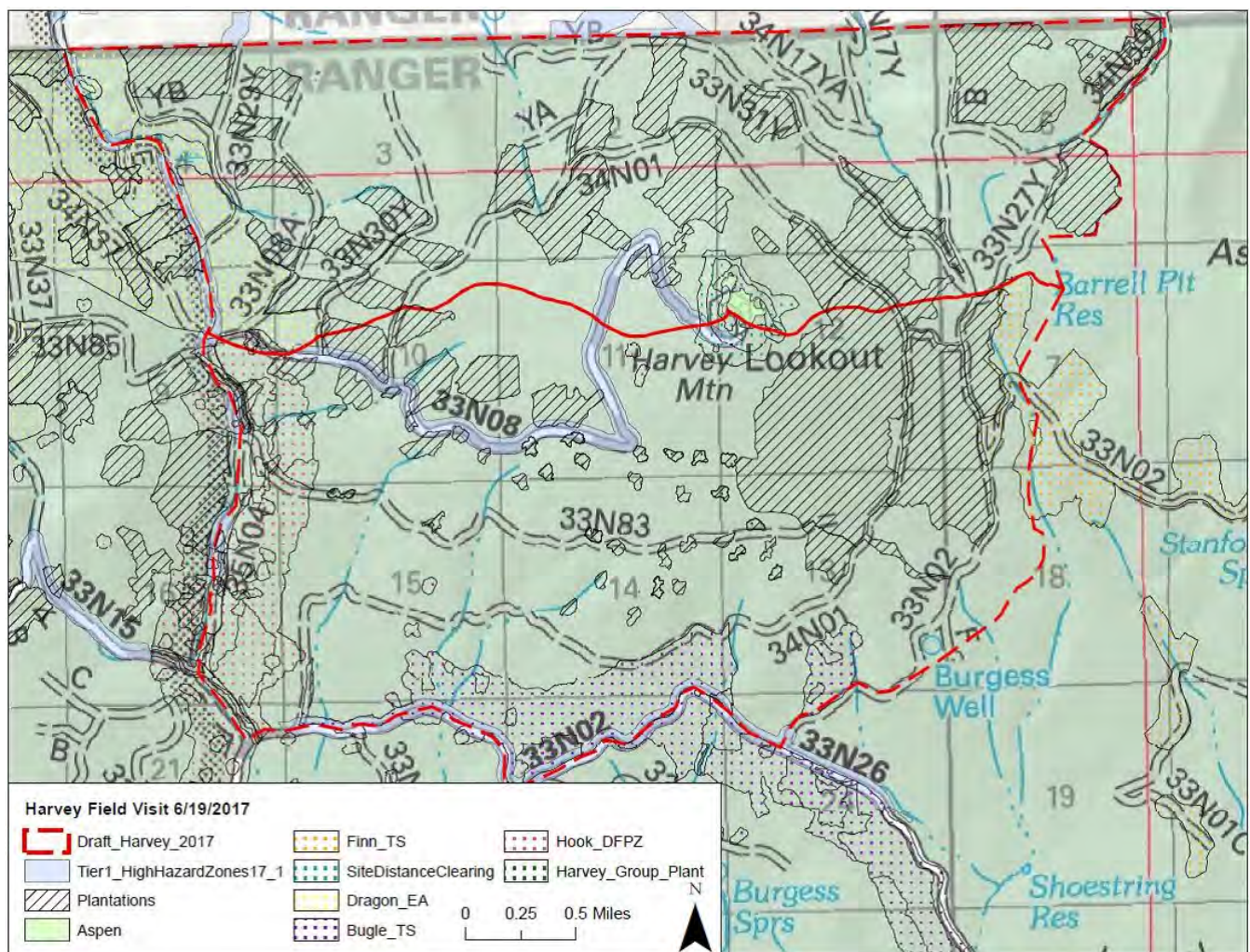
Agency or Agencies: USFS

Project Name: Harvey Project

Project Coordinates: N40.74065 W121.03564

Summary of Project: Very early in the planning process. Treatment units are still being defined and area could become two separate projects. Treatments will tie into and compliment previously implemented DFPZs. The desired conditions for the Harvey Project area include: 1) healthy forest conditions that are characterized by more open forested stands dominated by fire-resilient tree species, reduced surface fuel loads and ladder fuels where periodic low-intensity surface fires can be re-introduced and where wildfires can be safely fought, 2) forest areas with reduced tree densities that decrease risk of mortality from insects, drought, and disease, 3) functioning aspen, meadow and riparian systems which contribute to landscape biodiversity, and 4) cost effective treatments that contribute to community stability.

Project Map:



2019 Lassen County CWPP Work Plan

WUI Area: Susanville

Funding: Partially Funded

2019 Implementation

Number of Acres: 586

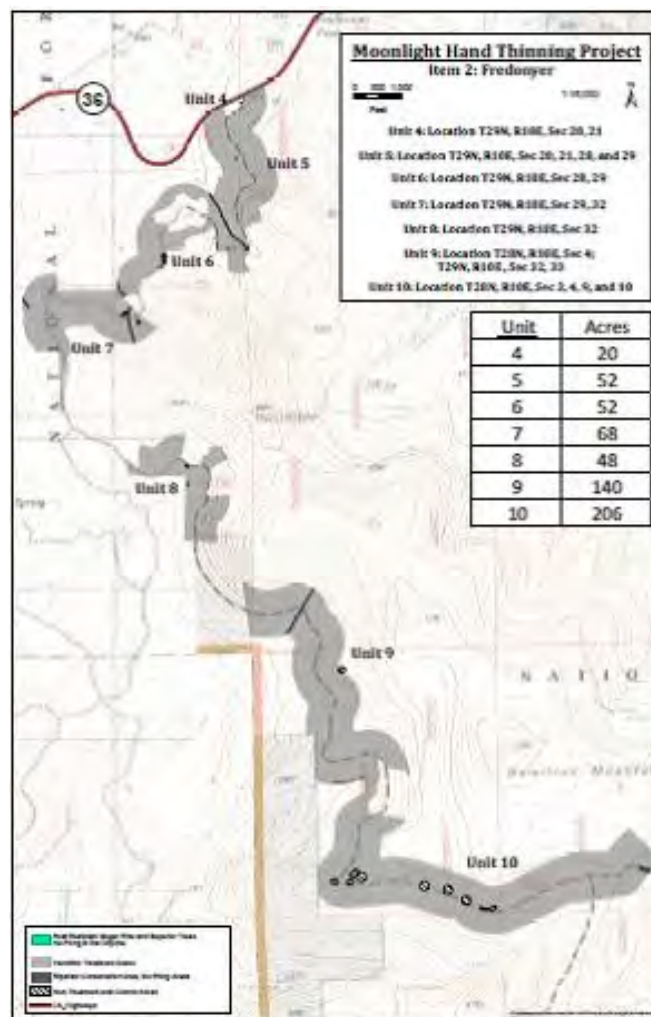
Agency or Agencies: USFS

Project Name: Moonlight Hand Thinning Project: Fredonyer

Project Coordinates: N40.35549 W120.87188

Summary of Project: Implementation began in the 2018. Hand thinning of conifers and brush, and hand piling the natural and activity generated surface fuels along Forest Road 29N46 for the purpose of removing ladder fuels and increasing canopy base heights within the treated stands. Due to steep slopes, erosive soils, and canopy-cover restrictions, fuel reduction treatments within the project area would be limited to hand thinning treatments. All trees 6 inches diameter breast height (DBH) and less, and all brush will be cut within a 500 foot buffer along designated roads.

Project Map:



2019 Lassen County CWPP Work Plan

WUI Area: Susanville

Funding: Partially Funded

2019 Implementation

Number of Acres: 534

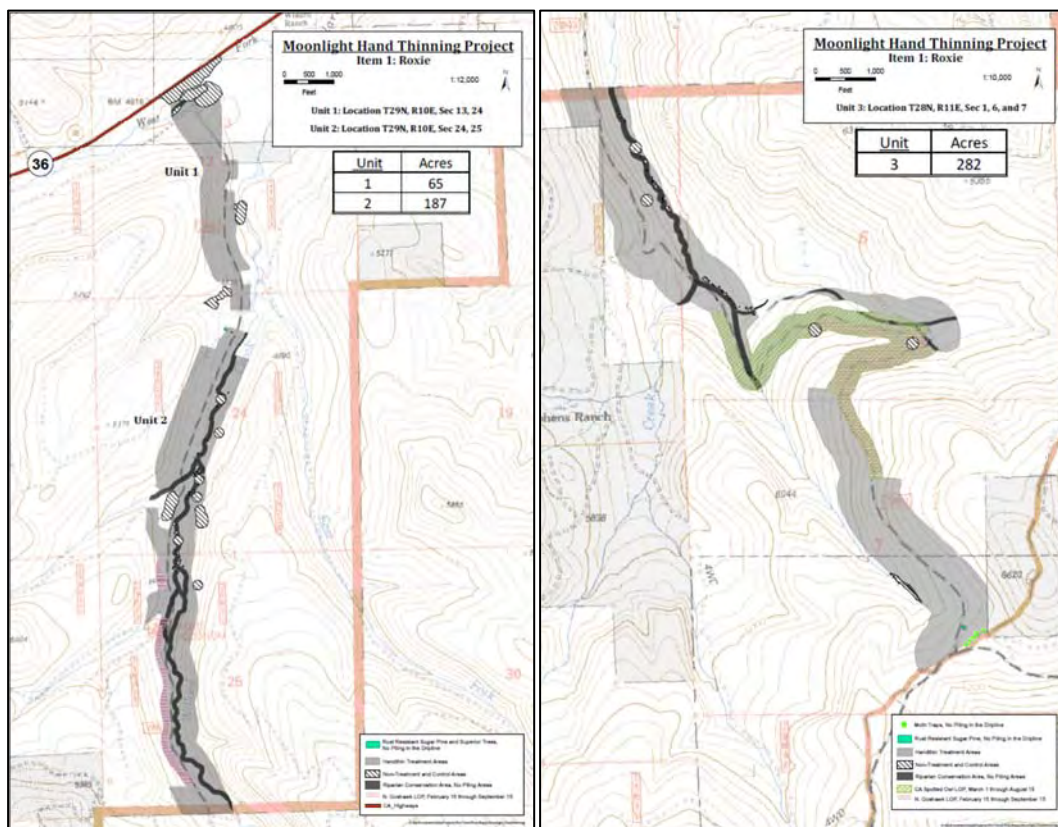
Agency or Agencies: USFS

Project Name: Moonlight Hand Thinning Project: Roxie

Project Coordinates: N40.355875 W120.80890

Summary of Project: Implementation began in the Fall of 2017. Hand thinning and piling has been completed on approximately ¾ of the project. Pile burning will begin in the winter of 2019. Hand thinning of conifers and brush, and hand piling the natural and activity generated surface fuels along Forest Road 29N03 for the purpose of removing ladder fuels and increasing canopy base heights within the treated stands. Due to steep slopes, erosive soils, and canopy-cover restrictions, fuel reduction treatments within the project area would be limited to hand thinning treatments. All trees 6 inches diameter breast height (DBH) and less, and all brush will be cut within a 500 foot buffer along designated roads and within a 200 foot buffer along designated roads within owl and goshawk PACs.

Project Map:



2019 Lassen County CWPP Work Plan

WUI Area: Spalding

Funding: Funded

2019 Implementation

Number of Acres: 77

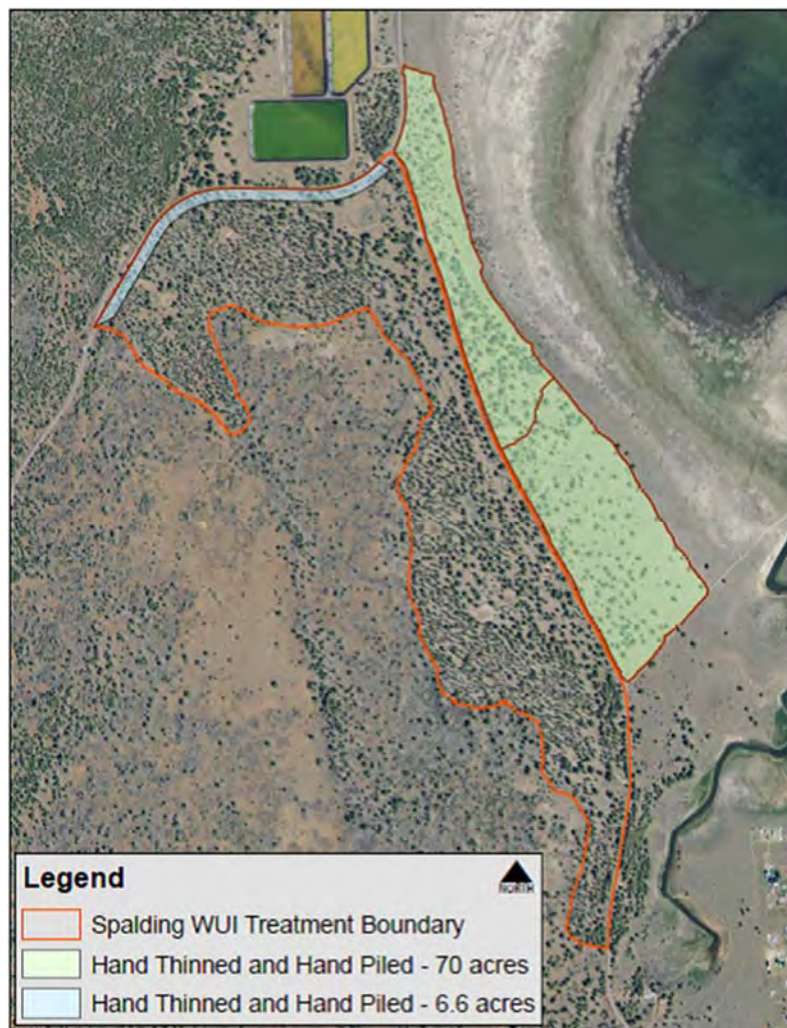
Agency or Agencies: USFS

Project Name: Spalding WUI Project

Project Coordinates: N40.680917 W120.79610

Summary of Project: The objective for the current thinning activities is to remove small diameter trees and brush (ladder fuels) that are remaining within the units post timber sale harvest. The thinning treatments will reduce the probability of torching and spot fires, and reduce the potential for mortality within the residual trees in the stand during future prescribed burning operations and/or during a wildland fire. The thinning, hand piling, and/or chipping along County Roads A1 and 518 will serve as future burn preparation in some areas, improve visibility and safety while driving along the roads, and improve the ingress/egress route for the community of Spalding if a wildfire were to occur in the area. The majority of thinning has been completed along both roads. Pile burning will continue this fall.

Project Map:



2019 Lassen County CWPP Work Plan

WUI Area: Close to Spalding

Funding: Planning/Not Funded

2019 Planning

Number of Acres: 4,677

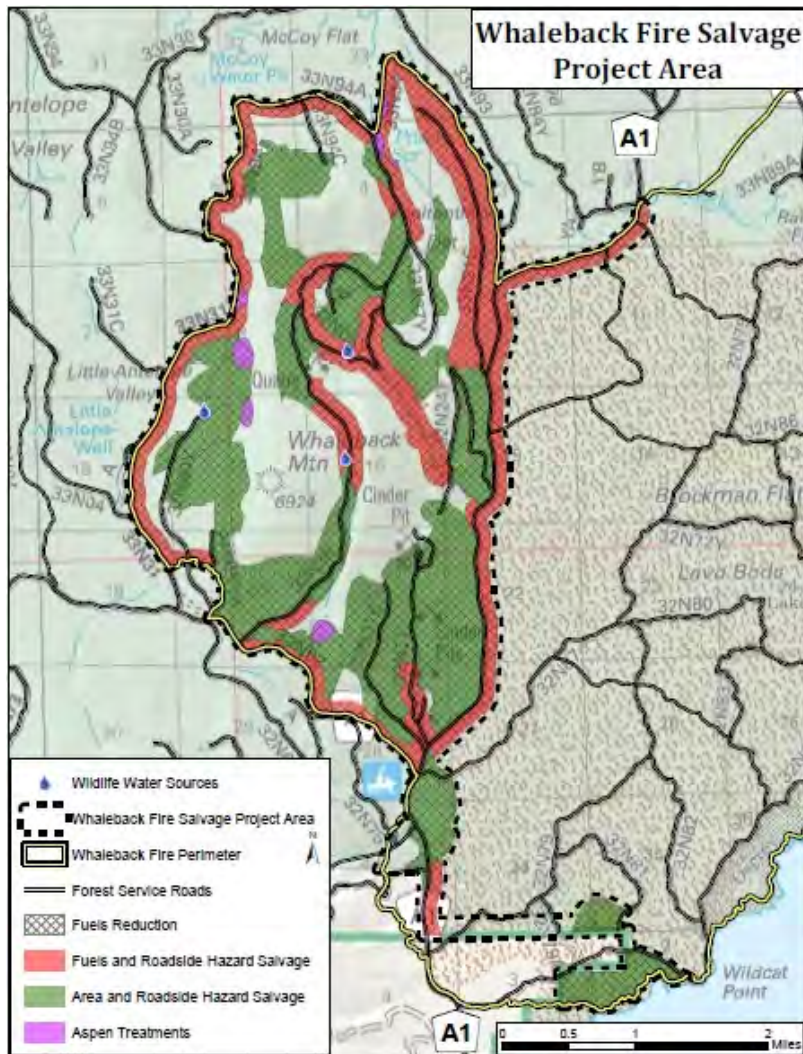
Agency or Agencies: USFS

Project Name: Whaleback Fire Salvage Project

Project Coordinates: N40.63396 W120.86851

Summary of Project: Planning is almost complete and implementation should begin this field season (2019). Salvage harvest operations would use ground-based, mechanical harvesting to remove or rearrange fire-killed and fire-injured trees from treatment areas (2,865 acres). Sawlogs and biomass would be removed. Hand felling would be used if mechanical treatments are cost prohibitive or in areas inaccessible to mechanical equipment. Approximately 37 miles (up to 1,750 acres) of hazard tree removal would occur along Forest Service roads and County Road A1. Fuels reduction treatments would be implemented in areas where fuel loading and dead trees exceed snag and log retention guidelines following salvage removal.

Project Map:



2019 Lassen County CWPP Work Plan

WUI Area: DFPZ

Funding: Funded

2018 Implementation

Number of Acres: 5300

Agency or Agencies: Modoc National Forest

Project Name: Ash Timber Sale

Project Coordinates: 41.155945 120.816693

Summary of Project: The purpose of this project is to promote a health, resilient forest and protect life and property in the WUI. This project is also designed to:

1. Restore stand structure and species composition to conditions more resilient to periodic drought and disturbance that could be maintained, over the long term, with prescribed fire.
2. Provide for long term wildlife habitat needs by increasing forest health and resiliency and reducing the risk of adverse impacts from wildfire.
3. Restore the sage steppe ecosystem and associated vegetative communities to desired habitat conditions reflecting ecological processes that existed pre-European settlement.

Project Map:



2019 Lassen County CWPP Work Plan

WUI Area: DFPZ

Funding: Funded

2018 Implementation

Number of Acres: 1500

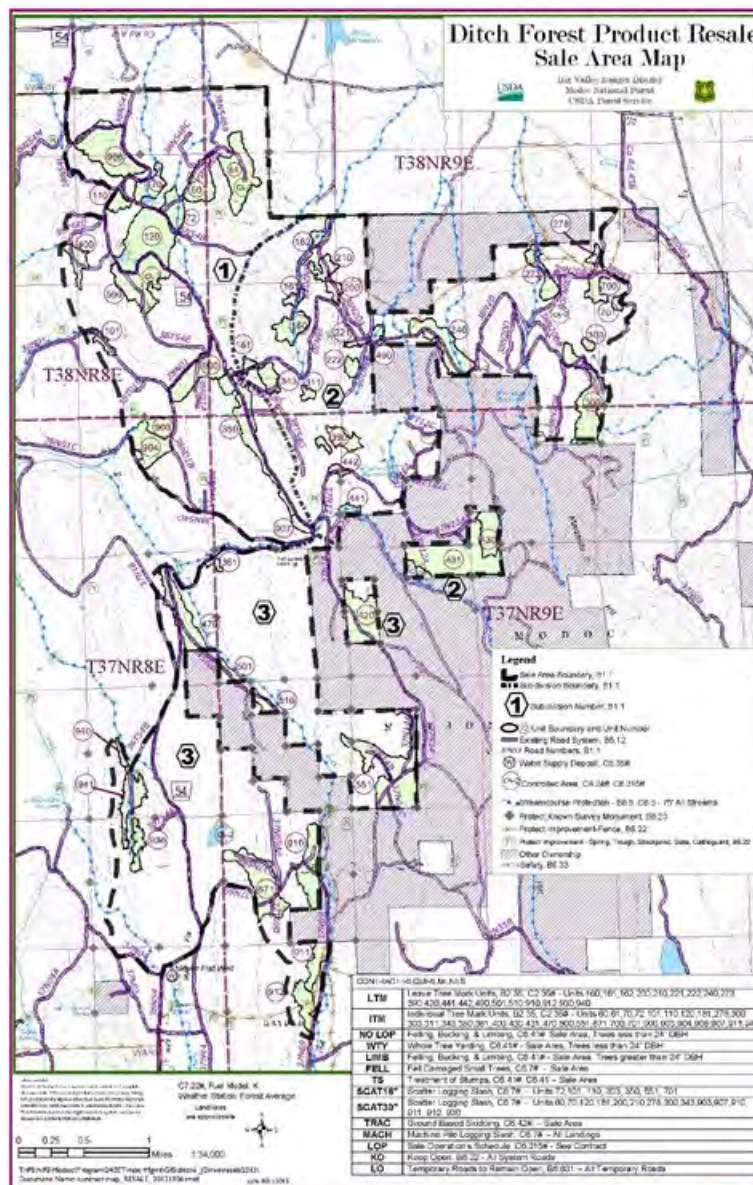
Agency or Agencies: Modoc National Forest

Project Name: Ditch Project

Project Coordinates: 41.08.09 120.9694

Summary of Project: This is a multi-product timber sale that has approximately 12,500 green tons within the sale area to be removed for forest health reasons.

Project Map:



2019 Lassen County CWPP Work Plan

WUI Area: Ravendale

Funding: Funded

2019 Implementation

Number of Acres: 750

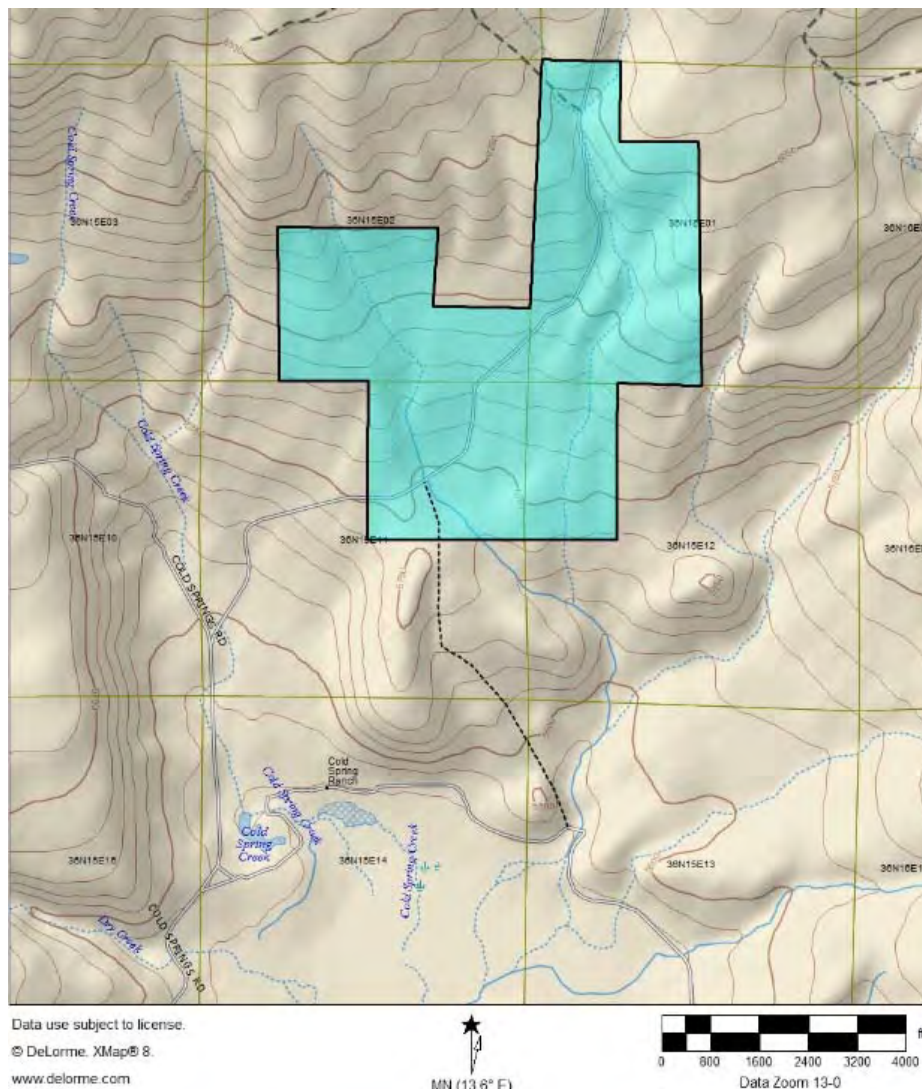
Agency or Agencies: NRCS

Project Name: ROBERTS RANCH NRCS

Project Coordinates: N 41.00677 W120.23026

Summary of Project: Robert's Ranch is located in the NE part of Lassen County on the eastern side of Cold Spring Mountain. The project is treating 750 acres of Western Juniper (*Juniper occidentalis*) for the main purpose of improving habitat for the Greater Sage Grouse (*Centrocercus urophasianus*) and for reducing the threat of catastrophic fire to the resource area. The project will utilize Brush Management for the cutting of the juniper and the Woody Residue for the removal of the trees and slash associated with the juniper cutting. Midnight Harvesting is currently working the project and is sending biomass to HL Power Company to utilize the resource.

Project Map:



2019 Lassen County CWPP Work Plan

WUI Area: Janesville/Milford

Funding: Partially Funded

2019 Implementation

Number of Acres: 2351

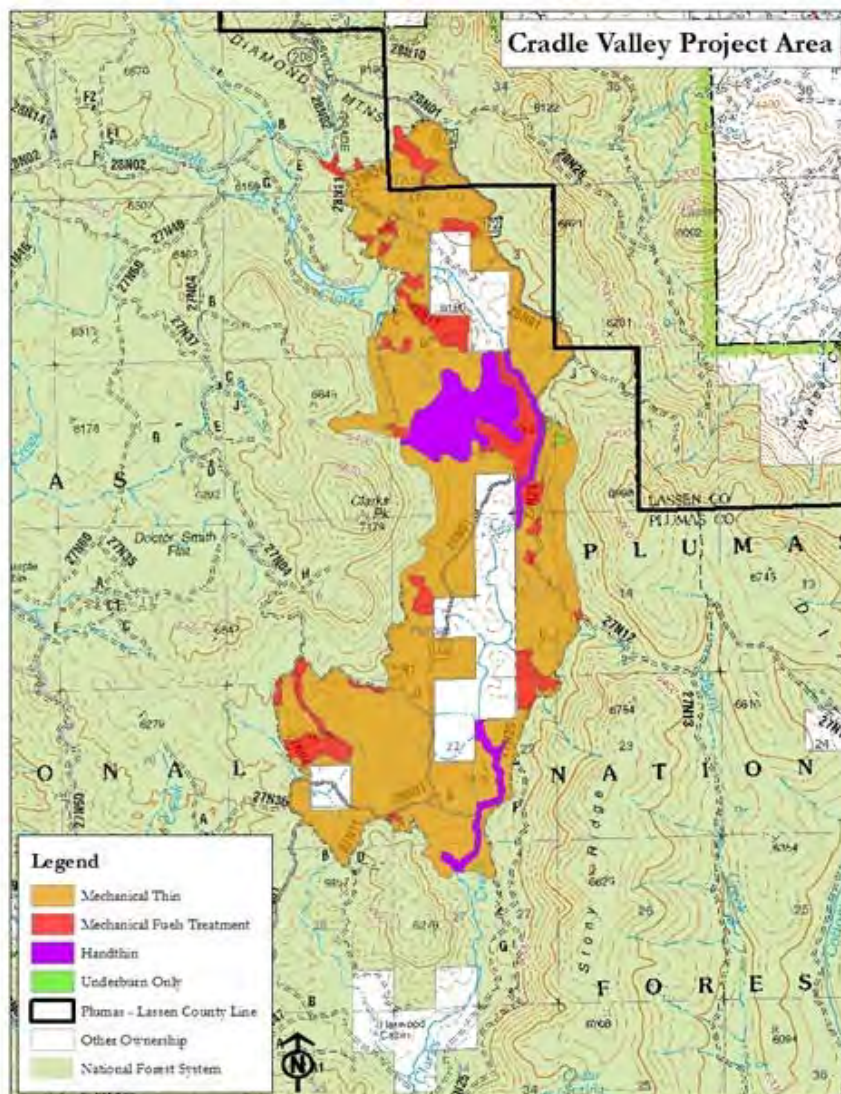
Agency or Agencies: USFS-PNF

Project Name: Cradle Valley

Project Coordinates: -120.5034 40.23274

Summary of Project: The Cradle Valley Project utilizes mechanical thinning (timber harvest), mechanical fuels treatments (mastication and grapple piling), hand thinning, and underburning. The entire project area is available for underburning. The project was designed using a collaborative process between the Plumas National Forest, the Susanville Indian Rancheria, and various other groups and individuals. Implementation of mechanical thinning, mechanical fuels treatments, and hand thinning could start as early as summer 2018. Any burning would be in the years following.

Project Map:



2019 Lassen County CWPP Work Plan

WUI Area: Milford

Funding: Planning/Not Funded

2019 Planning

Number of Acres: 4270

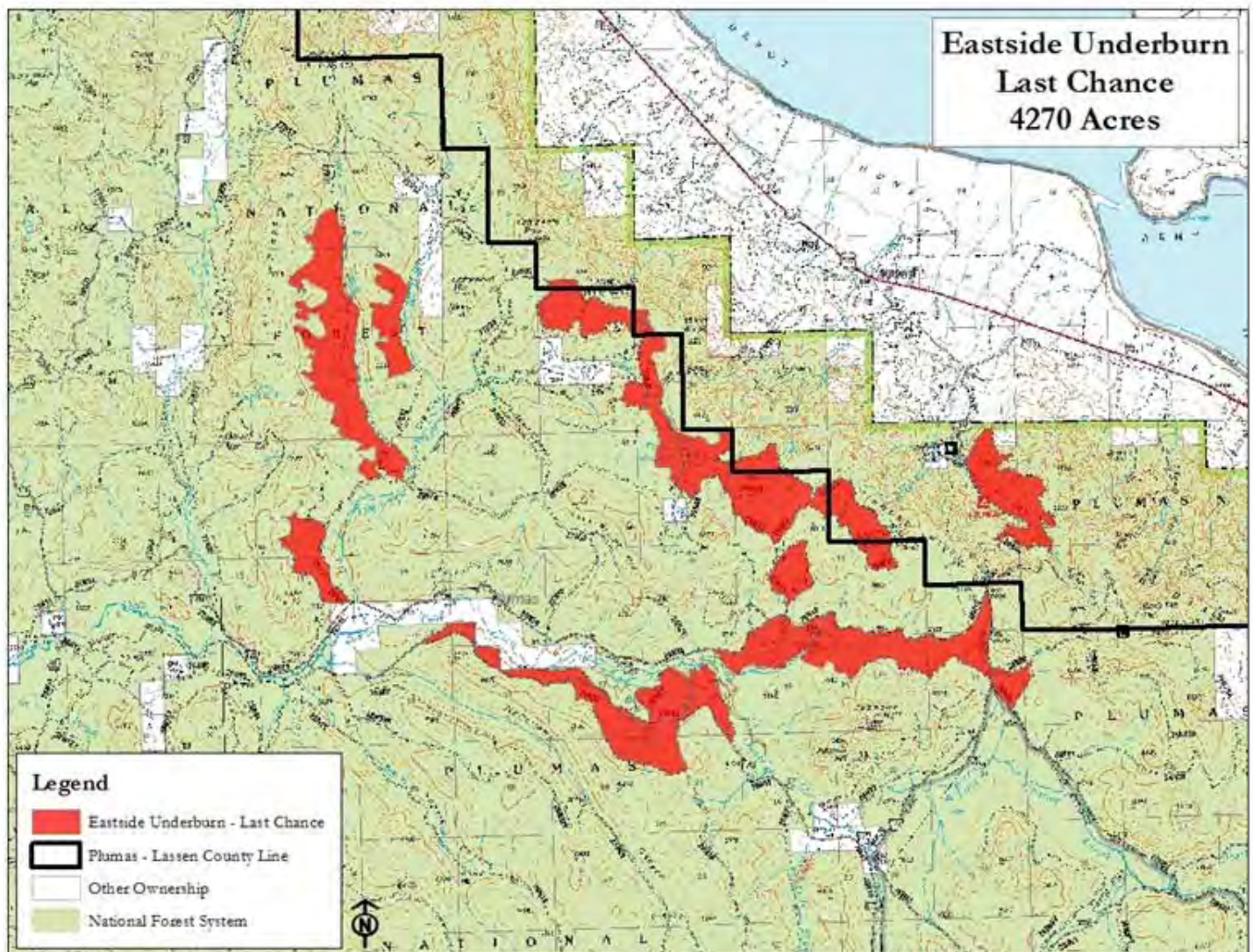
Agency or Agencies: USFS-PNF

Project Name: Eastside Underburn - Last Chance

Project Coordinates: -120.3958 40.13902

Summary of Project: This portion of the Eastside underburn project lies on top as well as on the east and west sides of the escarpment, near the Plumas/Lassen county line. The purpose of this project is to enhance resource protection from catastrophic wildfire, improve forest health, and to continue to restore fire adapted ecosystems in the eastside pine forest type.

Project Map:



2019 Lassen County CWPP Work Plan

WUI Area: Milford/Doyle/Constantia

Funding: Partially Funded

2019 Implementation

Number of Acres: 3596

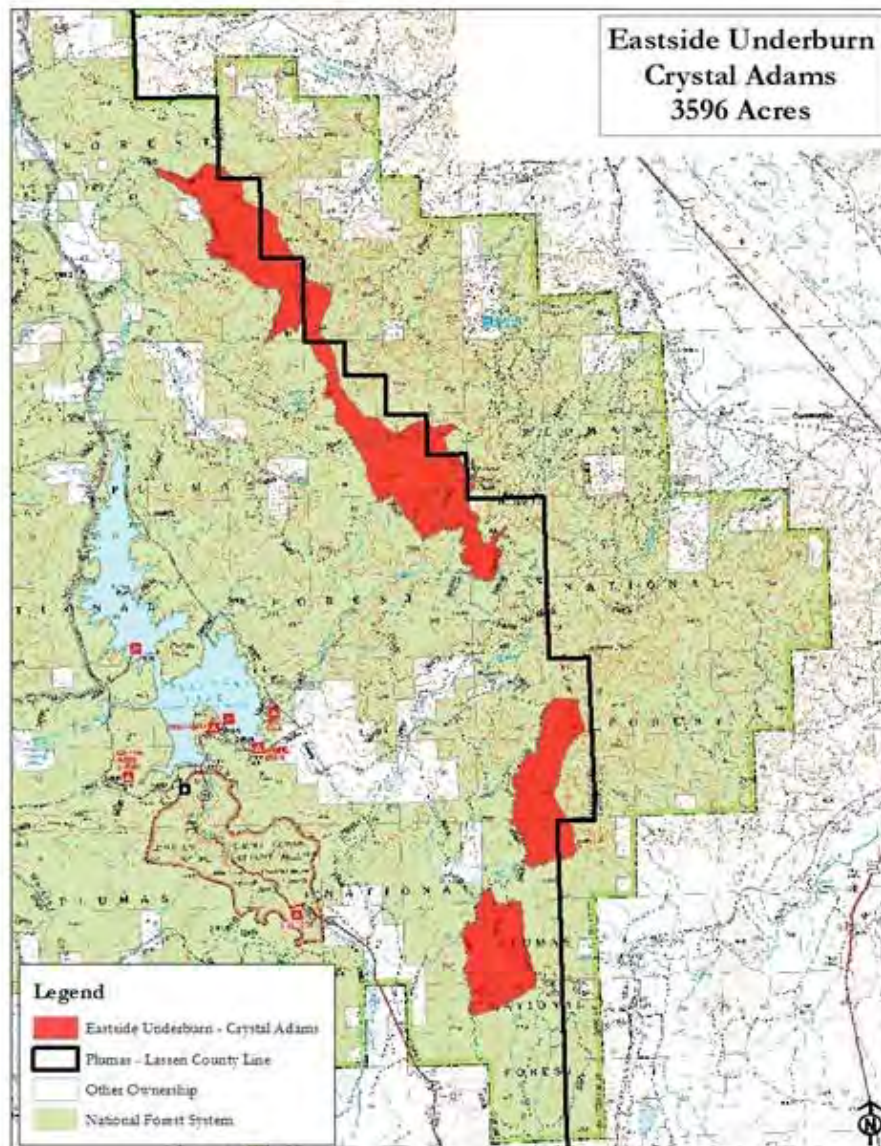
Agency or Agencies: USFS-PNF

Project Name: Eastside Underburn - Crystal Adams

Project Coordinates: -120.139 39.9447

Summary of Project: This portion of the Eastside underburn project lies mostly on the escarpment, near the Plumas/Lassen county line. The purpose of this project is to enhance resource protection from catastrophic wildfire, improve forest health, and to continue to restore fire adapted ecosystems in the eastside pine forest type.

Project Map:



2019 Lassen County CWPP Work Plan

WUI Area: Clear Creek/Westwood

Funding: Planning/Not Funded

2019 Planning

Number of Acres: 290

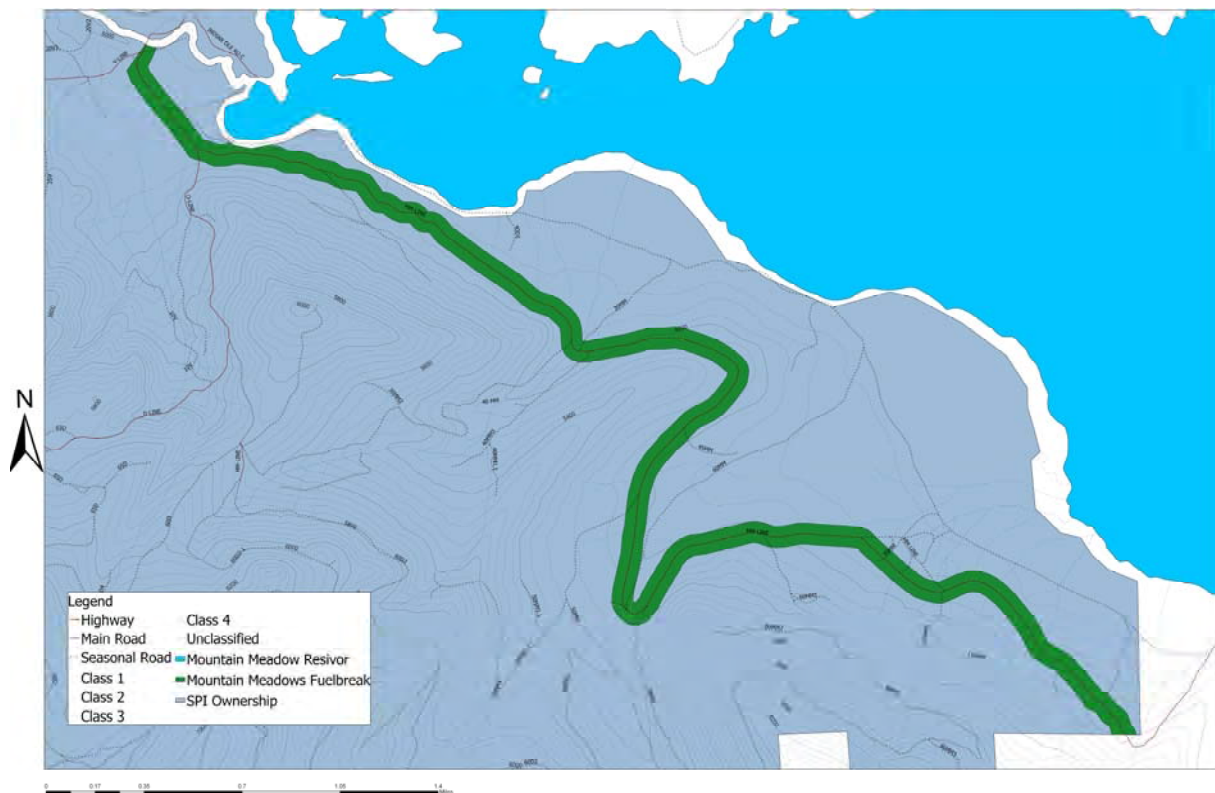
Agency or Agencies: SPI, CalFire, LCFSC

Project Name: Mountain Meadows

Project Coordinates: N40.25606 W120.99913

Summary of Project: The project will treat fuels along SPI's MM-Line on the south side of Mountain Meadows Reservoir. Fuels loads will be reduced by lopping and scattering and by mastication. The area receives moderate recreational use by the public for activities such as walking, fishing and hunting. Resources at risk include: residential and commercial structures (Westwood and Clear Creek); utility infrastructure (Indian Ole Dam and associated electric lines); critical wildlife habitat; private and federal timberland.

Project Map:



2019 Lassen County CWPP Work Plan

WUI Area: Westwood/Coppervale

Funding: Planning/Not Funded

2019 Planning

Number of Acres: 131

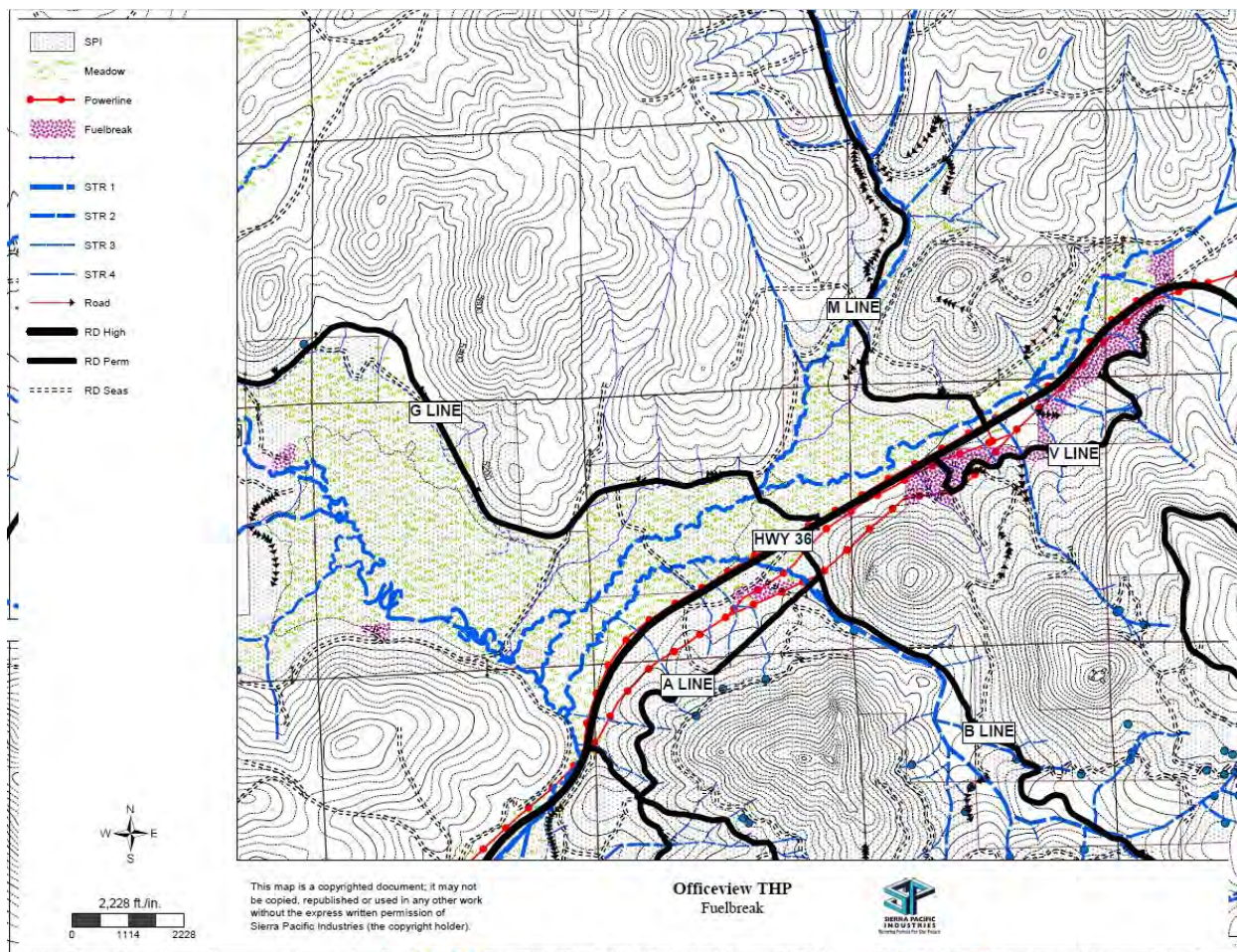
Agency or Agencies: SPI, CalFire, LCFSC, LNF

Project Name: Officeview

Project Coordinates: N40.34886 W120.89468

Summary of Project: The project will treat fuels along the State Highway 36 in the vicinity of the 101 Ranch. Fuels loads will be reduced by timber operations, biomass thinning and mastication. Highway 36 receives large volumes of commercial and personal vehicle traffic during the fire season. Resources at risk include: residential, recreational and commercial structures (Westwood and Coppervale); utility infrastructure (LMUD); critical wildlife habitat; private and federal timberland.

Project Map:



2019 Lassen County CWPP Work Plan

WUI Area: Clear Creek/Westwood

Funding: Planning/Not Funded

2019 Planning

Number of Acres: 200

Agency or Agencies: SPI, CalFire, LCFSC

Project Name: V-Line Dyer

Project Coordinates: N40.28031 W121.06855

Summary of Project: The project will treat fuels along SPI's V-Line on the north and west slope of Dyer Mountain. Fuels loads will be reduced through biomass thinning and mastication. The area receives moderate recreational use by the public for activities such as walking and hunting. Resources at risk include: residential and commercial structures (Westwood and Clear Creek); utility infrastructure (Indian Ole Dam and associated electric lines); critical wildlife habitat; private and federal timberland..

Project Map:

